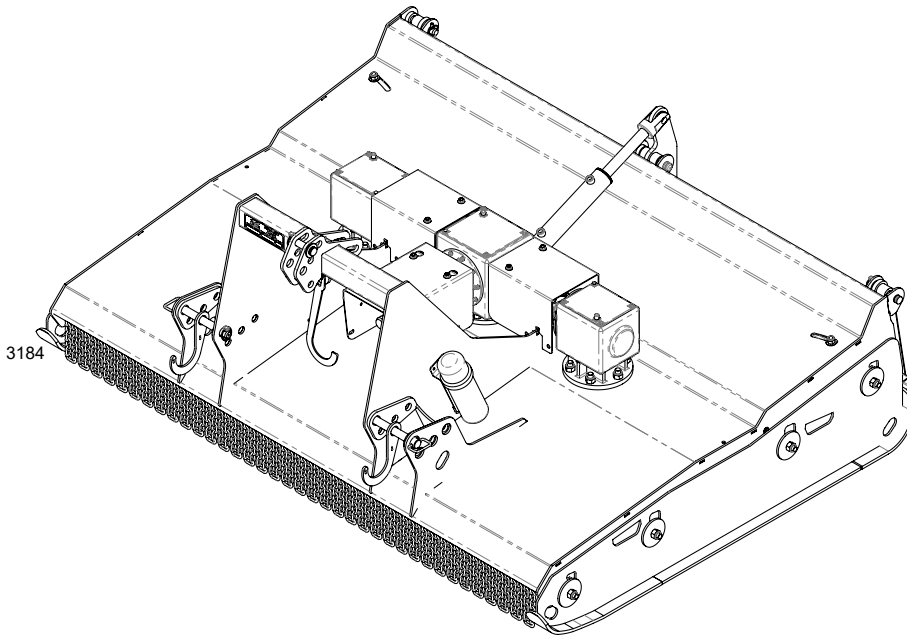


Pasture Topper



The Pasture Topper Series

PARTS MANUAL

Including Common Parts & Optional Equipment

Covering the

8', 10', & 12' Models

GPN: 229014 REVISION C

September 2022

COPYRIGHT

Neither this manual or part thereof may be reproduced or published
without the permission of AF Gason Pty Ltd

AF GASON



Contents

Ordering Parts	3
Bolt Torques	4
Common Parts	5
General Assembly 8' & 10' 3PL	6
General Assembly 8' & 10' 3PL (Continued)	7
General Assembly 10' & 12' Trailed	8
General Assembly 10' & 12' Trailed (Continued)	9
Decals 3PL Models	10
Decals Trailed Model	11
Single Blade Setup	12
Dual Blade Option	13
Driveline 8'	14
Driveline 10'	15
12' Driveline	16
Clutch Assembly - 540 RPM Models	17
Gearbox - Cutterhead	18
Gearbox - Tee	19
Input PTO Shaft 8' & 10' 3PL	20
Input PTO Shaft Trailed 540 RPM Models	21
Input PTO Trailed Shaft 1000 RPM Models (2020 - Current)	22
Input PTO Trailed Shaft 1000 RPM Models (2020 - Current) (Continued)	23
Input PTO Trailed Shaft 1000 RPM Models (Pre-2020)	24
Input PTO Trailed Shaft 1000 RPM Models (Pre-2020) (Continued)	25
PTO - Transfer Shaft	26
Cushion Coupling	27
8' PT Driveline Guards	28
10' & 12' PT Driveline Guards	29
Hydraulic Components	30
Axle	31

Ordering Parts

The following information must be supplied to your local dealer to facilitate fast and accurate processing of a replacement parts order:-

- Gason Part Number (GPN) and description (as given in this manual)
- Quantity Required
- Machine Model & Serial Number

For your convenience, record the following information below.

Dealer Name: _____

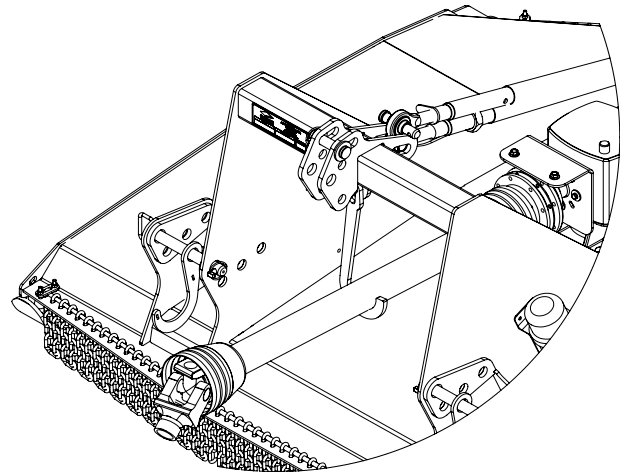
Dealer Address: _____

Dealer Phone Number: _____

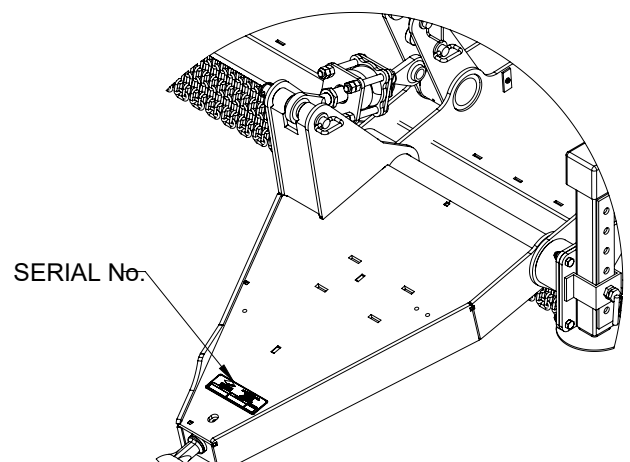
Machine Model No: _____

Date of Purchase: _____

Serial Number: _____



Serial No. Tag At Right Front Of Machine



Serial No. Tag At Front Of Machine

Subject to any applicable Federal, State or Territory laws or ordinances, which may apply from time to time, AF Gason Pty Ltd reserves the right to make changes in design and specifications without notice or obligation and to change or discontinue models at any time without incurring any liability to any Purchaser thereof.

Left and right hand: All references in this manual are determined by facing the direction of travel.

For warranty provisions please consult your Installation and Warranty Registration document.

While every effort has been made to ensure the accuracy of the information in this manual, AF Gason Pty Ltd reserves the right to delete, change or add information without notice.

Bolt Torques

As part of our service to the end consumer Gason make every effort to ensure all bolts and nuts are torqued using specific procedures during the assembly process.

Throughout this parts manual the following symbols may be seen which indicate important settings critical to the continued safe operation of your mower/slasher.



: Critical Torque Setting (N m)



: Always Replace after disassembly

Where a Torque is not specified on a nut or bolt it should be assumed that it is torqued according to the following tables.

Size	Thread Pitch	Recommended Assembly Torque					
		5		8		Wheel Stud	
S.A.E Grade Number		5		8		Wheel Stud	
Head Markings (Manufacturers marks may vary)							
7/16	UNF	43	59	60	82	-	-
7/16	UNC	39	53	54	74	-	-
1/2	UNF	67	91	94	128	-	-
1/2	UNC	59	81	83	113	-	-
5/8	UNF	135	184	186	253	-	-
5/8	UNC	117	159	165	224	-	-
3/4	UNF	235	319	325	441	-	-
3/4	UNC	210	285	290	394	-	-
7/8	UNF	370	502	520	706	-	-
7/8	UNC	335	455	470	638	-	-
1	UNF	550	746	775	1052	-	-
1	UNC	505	685	710	963	-	-

Metric Grade Number		8.8		10.9		Wheel Stud	
Head Markings (Manufacturers marks may vary)							
M10	1.5	29	40	41	56	-	-
M12	1.75	51	70	73	100	-	-
M16	-	-	-	-	-	170	231
M16	2.0	126	171	180	245	-	-
M18	1.5	-	-	-	-	254	345
M20	1.5	-	-	-	-	376	510
M20	2.5	247	335	351	477	-	-
M22	1.5	-	-	-	-	475	645
M24	-	-	-	-	-	500	679
M24	3.0	425	577	608	825	-	-

NOTE

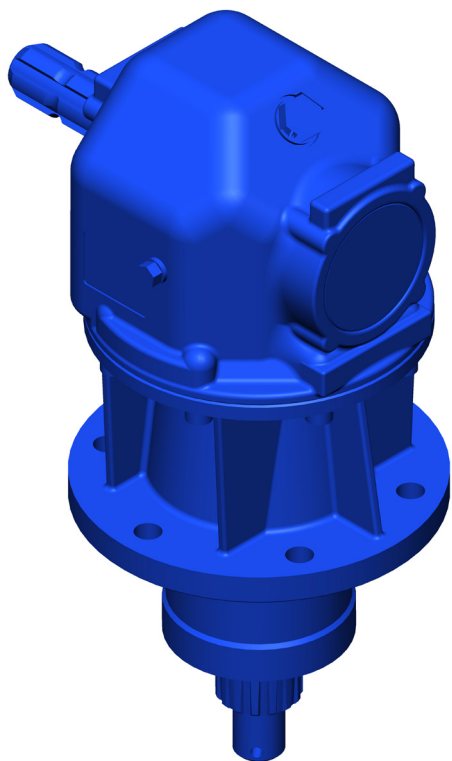
The above figures are based on zinc plated, lightly oiled hardware.

Recommended assembly torques for alternative finish or application, may be obtained by multiplying the torque figures in the table by:

0.78 – for degreased zinc plated bolts.

1.10 – for black oxide finished bolts.

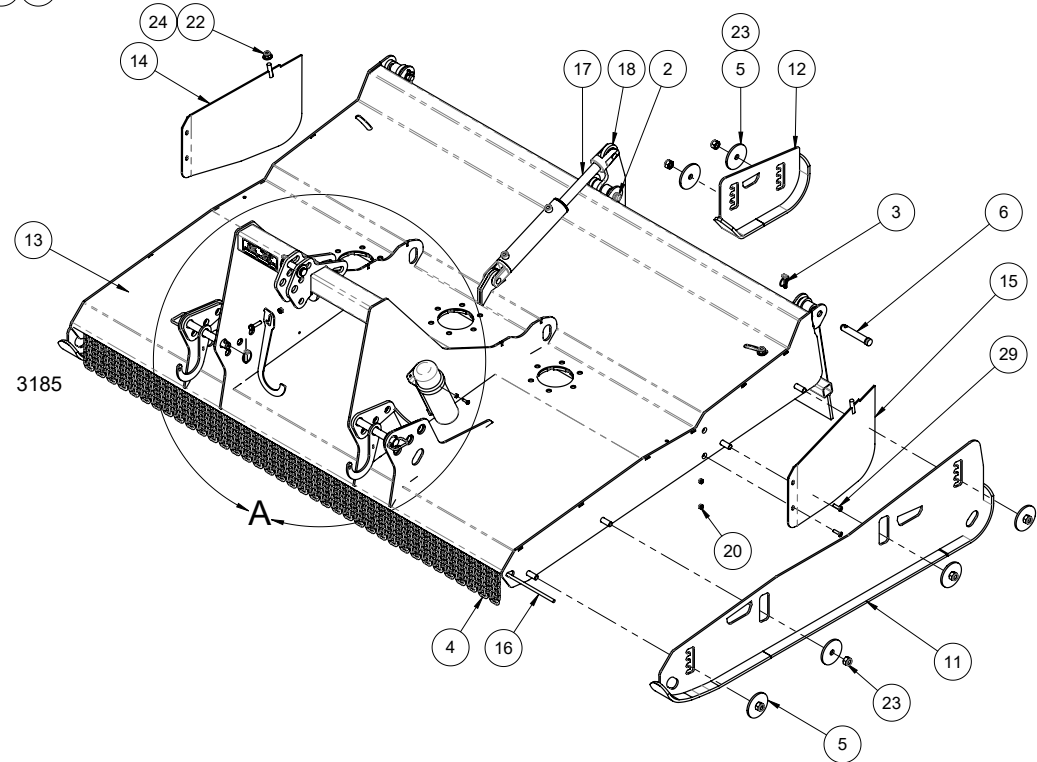
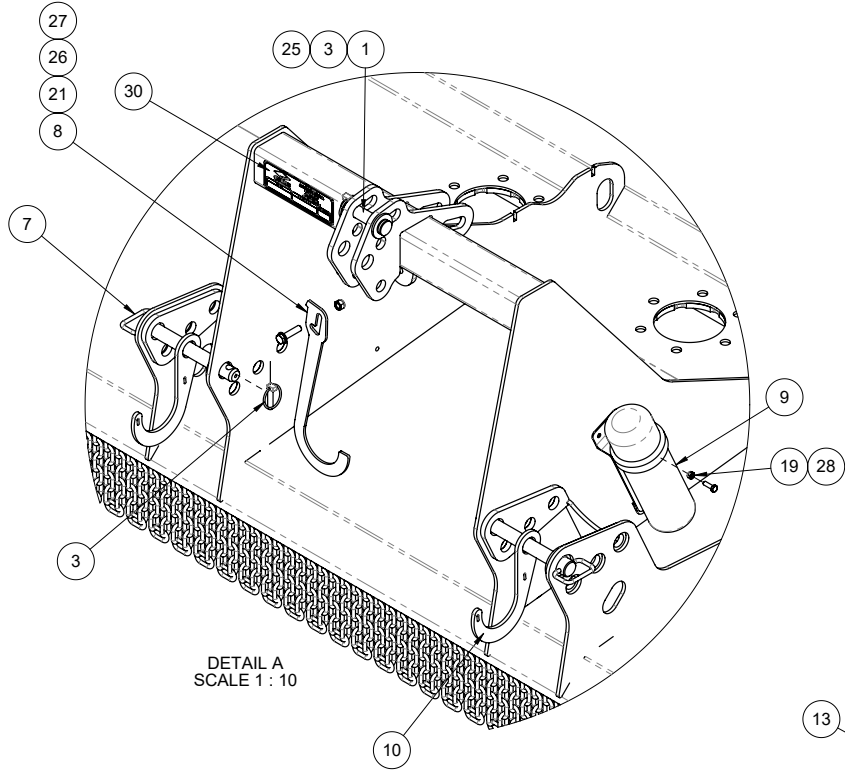
Common Parts



GASON



General Assembly - 8' & 10' 3PL Models

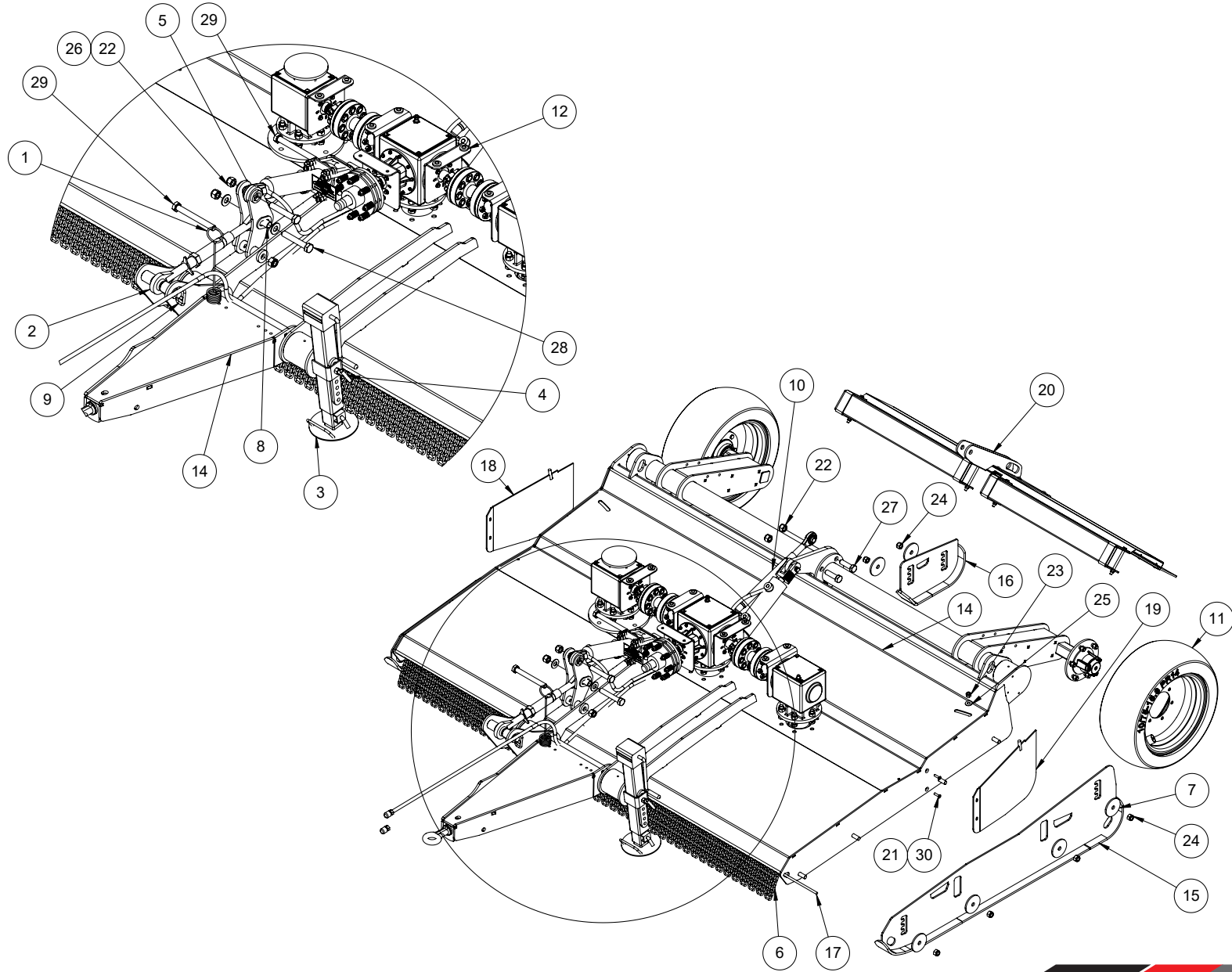


General Assembly - 8' & 10' 3PL Models (Continued)

Item	GPN	Description	Qty	Item	GPN	Description	Qty
1	201075	Pin Top Link 1" x 3-7/16"	1	16	226425	Rod - 8' 3PL only	1*
2	208269	Top Link Pin 1" x 5-3/8"	1		226340	Rod - 10' 3PL only	1*
3	208695	Lynch Pin - Ø11 x 50mm	6	17	226746	Cylinder Hyd 2.5" x 8"	1
4	223676	Chain 8mm 11 Links - Mower (8',10')	37,46	18	228220	Guard - Rear 8ft PT	1
5	223720	Washer - Mower	10	19	903302	Nut Nyloc M8	2
6	223973	Pin Top Link 1" Dia x 4-1/2"	2	20	903406	Nut Nyloc M10 CL8 AS1285	4
7	223974	Pin Drawbar	2	21	903605	Nut Nyloc M12 CL8 AS1285	1
8	224008	Hook - PTO Support	1	22	903930	Nut Nyloc M16 CL8	2
9	224257	Document Holder - Black	1	23	903931	Nut Nyloc M20 CL8 AS1285	10
10	224426-01	Plate	2	24	906701	Washer Flat 5/8 x 1-1/2 x 14G ZP	2
11	226334	Skid Assy - 8' & 10' PT	2	25	906902	Washer Flat 1" x 2-1/8" x 7G ZP	2
12	226336	Skid Assy - PT Rear	1	26	907503	Washer Flat M12 x 24 x 1.6 ZP	1
13	226345	8ft 3PL Proper Topper Weldment	1*	27	913615	Bolt M12 x 50 8.8 HEX ZP	1
	226263	10ft 3PL Proper Topper Weldment	1*	28	917309	Screw Set M8 x 25 x 1.25P	2
14	226353	Rear Deflector - RHS	1	29	932212	Screw Set M10 x 40 CAP C/SUNK	4
15	226354	Rear Deflector - LHS	1	30	8001418	Tag Serial No	1

* Only in model as indicated

General Assembly - 10' & 12' Trailed Models

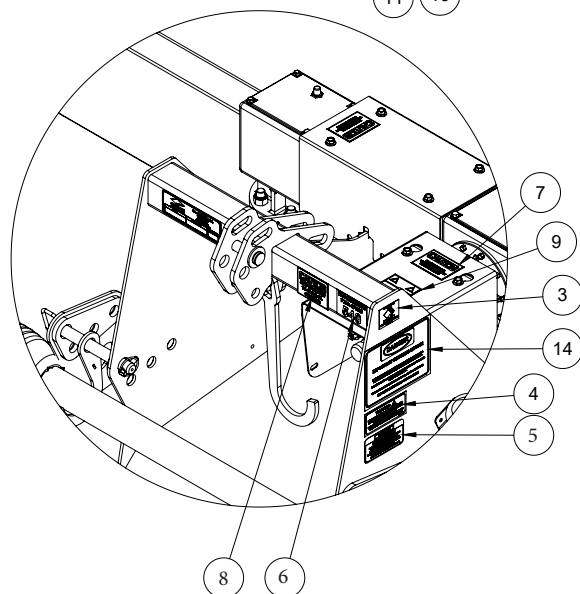
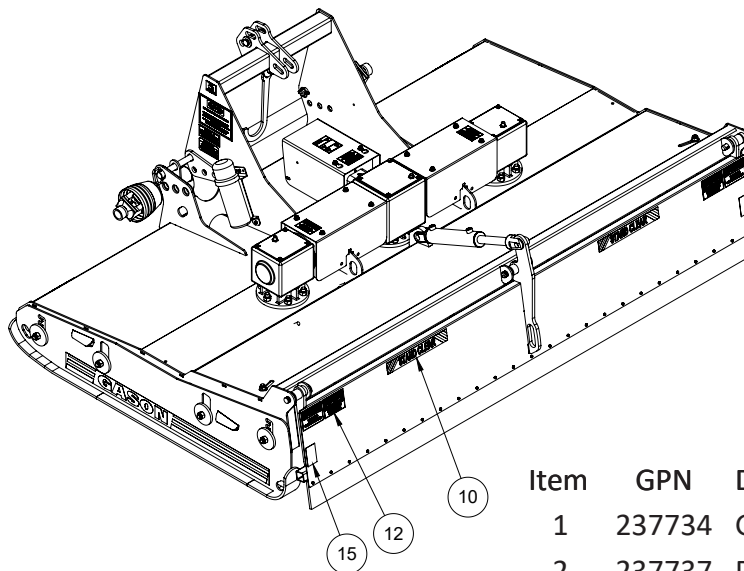
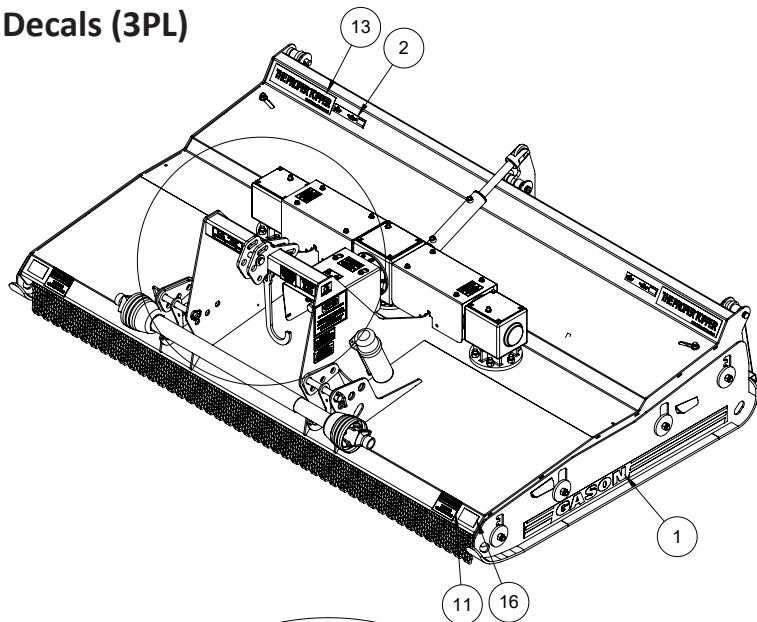


General Assembly - 10' & 12' Trailed Models (Continued)

Item	GPN	Description	Qty	Item	GPN	Description	Qty
1	211089	Hose Stand Spring	1	17	226340	Rod - 10' PT	1*
2	226411	Link - Adjuster	1		225729	Rod - 12' PT	1*
3	222669	3T Jack Weldment	1	18	226353	Rear Deflector - RH	1
4	222671	Jack Lock Handle	1	19	226354	Rear Deflector - LH	1
5	237925	Link Bracket	1	20	238525	Rear Guard 10' PT Trailed	1*
6	223676	Chain - 8mm 11 Link	46,56		238529	Rear Guard 12' PT Trailed	1*
7	223720	Washer - Mower	8	21	903406	Nut - Nyloc M10 Cl 8	4
8	223751	Boss	1	22	903911	Nut - Nyloc 1" UNC	8
9	223750	Drawbar Pin - 1 1/4" x 8-1/4"	1	23	903930	Nut - Nyloc M16 Cl 8	2
10	224258	Top Link CAT 2 760mm	1	24	903931	Nut - Nyloc M20 Cl 8	8
11	224979	Wheel Assy 10/75-15.3	2	25	906701	Washer - Flat 5/8" x 1-1/2"	2
12	225153	Rubber Cushion	8	26	906902	Washer - Flat 1" x 2-18"	4
13	225474	Hdraulic Kit - 10' & 12' PT	1	27	912905	Bolt 1" x 3-1/2" UNC	4
14	226264	Weldment - 10' PT Trailed	1*	28	912908	Bolt 1" x 6" UNC	2
	224835	Weldment - 12' PT Trailed	1*	29	912913	Bolt 1" x 9" UNC	2
15	226334	Side Skid	2	30	933212	Screw - Set M10 x 40	4
16	226336	Rear Skid	1				

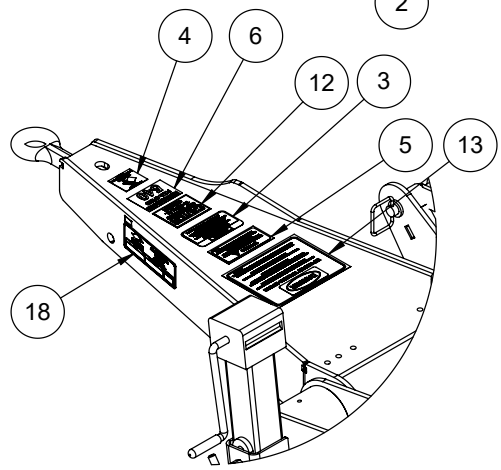
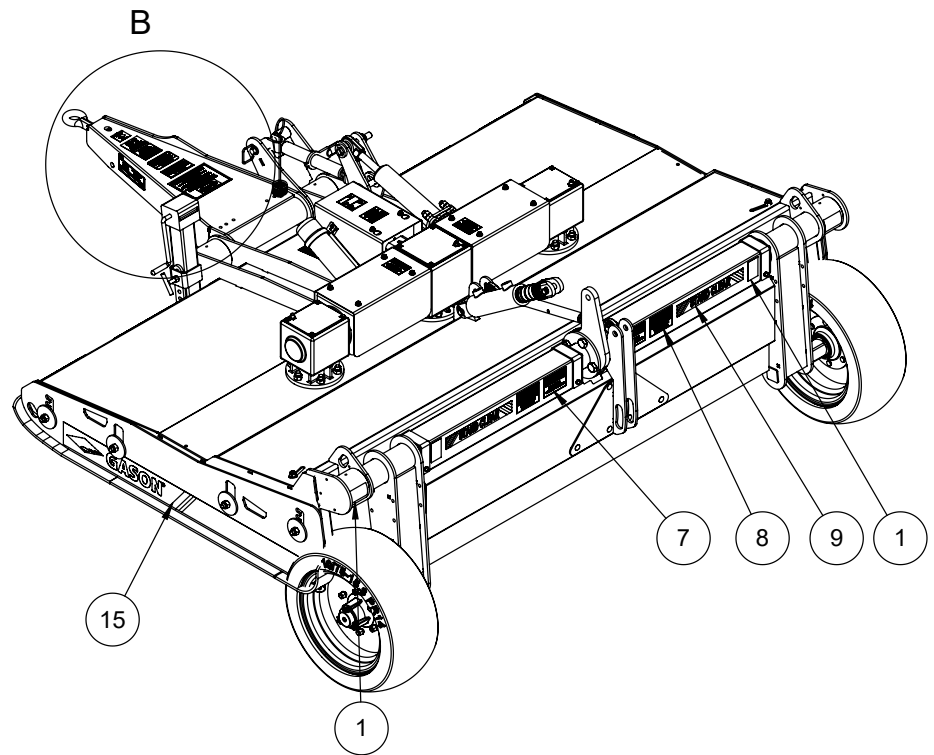
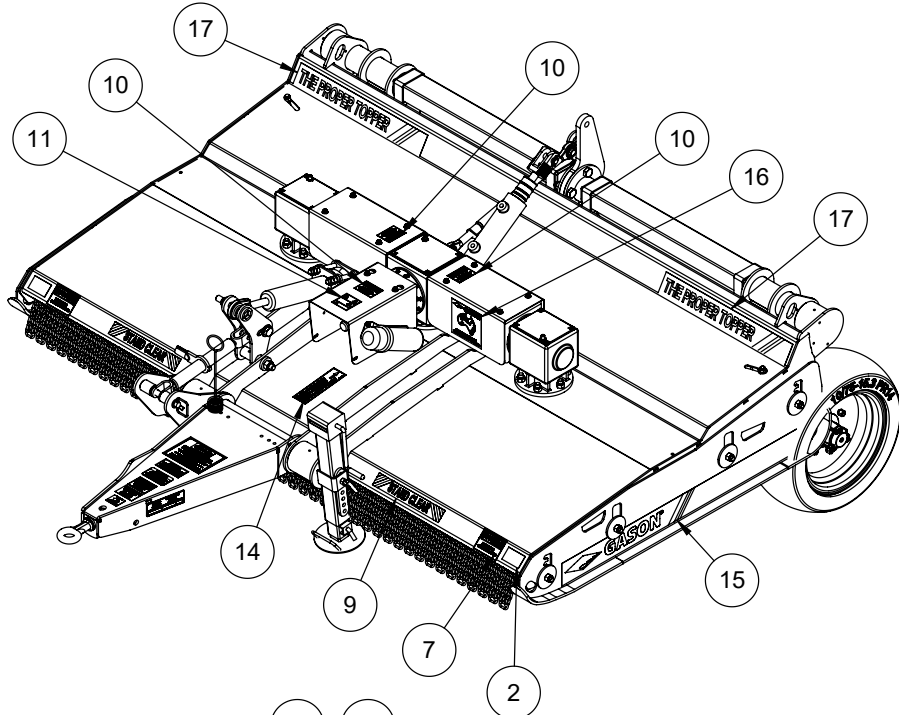
* Only in model as indicated

Decals (3PL)



Item	GPN	Description	Qty
1	237734	Gason Decal	2
2	237737	Decal Gason-An Australian	2
3	207998	Decal TMA	1
4	216072	Decal-Do Not Ride	1
5	206955	Decal Warning -Safety	1
6	224317	Decal- 540RPM	1
7	224323	Decal- Caution Guard	3
8	224328	Decal- Caution Stop	1
9	224327	Decal- PTO Rotating	1
10	224322	Decal- Stand Clear	2
11	224320	Decal- Warning Blade	4
12	224321	Decal- Warning Debri	2
13	238551	Decal - Proper Topper	2
14	226596	Decal- Danger Notice PT	1
15	205830	Tape Red Reflective - 60 x100	2
16	206694	Tape White Reflective - 60 x100	2

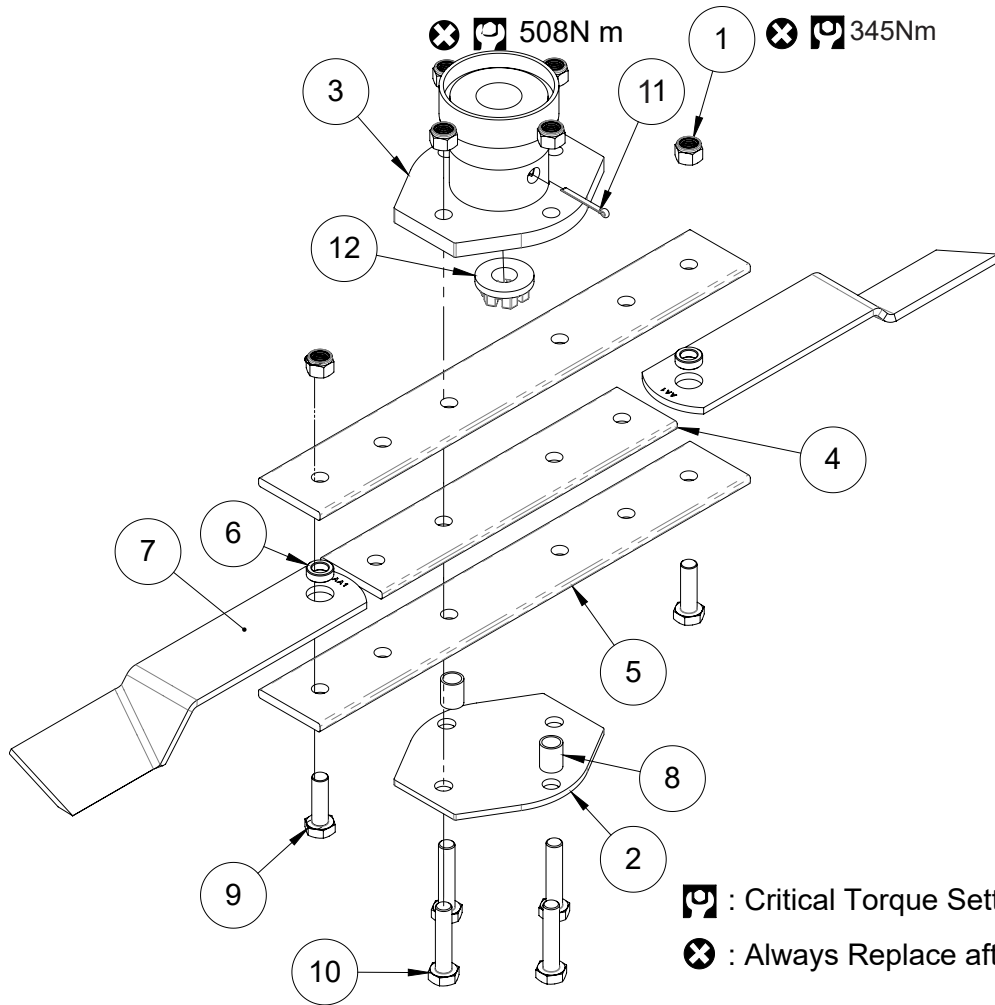
Decals (Trailed)



Item	GPN	Description	Qty.	Item	GPN	Description	Qty
1	205830	Tape Red Reflective	4	10	224323	Decal - Caution Guard	3
2	206694	Tape White Reflective	2	11	224327	Decal - PTO Rotating	1
3	206955	Decal Warning -Safety	1	12	224328	Decal - Caution Stop	1
4	207998	Decal - TMA	1	13	228324	Decal - Danger Mower	1
5	216072	Decal - Do Not Ride	1	14	234393	Decal - Grease Clutch	1
6	224317	Decal - 540RPM	1*	15	237734	Decal - Gason	2
	224318	Decal - 1000RPM	1*	16	237737	Decal - Aus Made	1
7	224320	Decal -Warning Blade	4	17	238551	Decal - Proper Topper	2
8	224321	Decal - Warning Debris	2	18	8001418	Serial Tag	1
9	224322	Decal - Stand Clear	4				



Single Blade Set-up



Item	GPN	Description	Qty		
			8'	10'	12'
1	903803	Nut Nyloc 3/4" UNF GR.8	6	6	6
2	226348	Clamp Plate	1	1	1
3	226343	Rotor Boss Adapter	1	1	1
4	226342	Rotor Bar Spacer - 600	-	1	-
	226430	Rotor Bar Spacer - 500	1	-	-
	225092	Rotor Bar Spacer - 950	-	-	1
5	226741	Rotor Bar - 600	-	2	-
	226429	Rotor Bar - 500	2	-	-
	225089	Rotor Bar - 950	-	-	1
6	225157	Bush - Blade 3/4"ID x 9mm	2	2	2
7	225158	Blade 450mm - Anti Clockwise (Shown)	-	2	2
	225159	Blade 450mm - Clockwise (Not Shown)	-	2	2
	226427	Blade 350mm - Anti Clockwise (Shown)	2	-	-
	226428	Blade 350mm - Clockwise (Not Shown)	2	-	-
8	226369	Spacer - Rotor Bar	2	2	2
9	912813	Bolt 3/4 UNF x 2-1/2 HT	2	2	2
10	912820	Bolt 3/4 UNF x 3.5 HT	4	4	4
11	215313	Pin - Split M6 x 60	1	1	1
12	226587	Nut - Gearbox Sleeve		1	

⌚ : Critical Torque Setting (N.m)

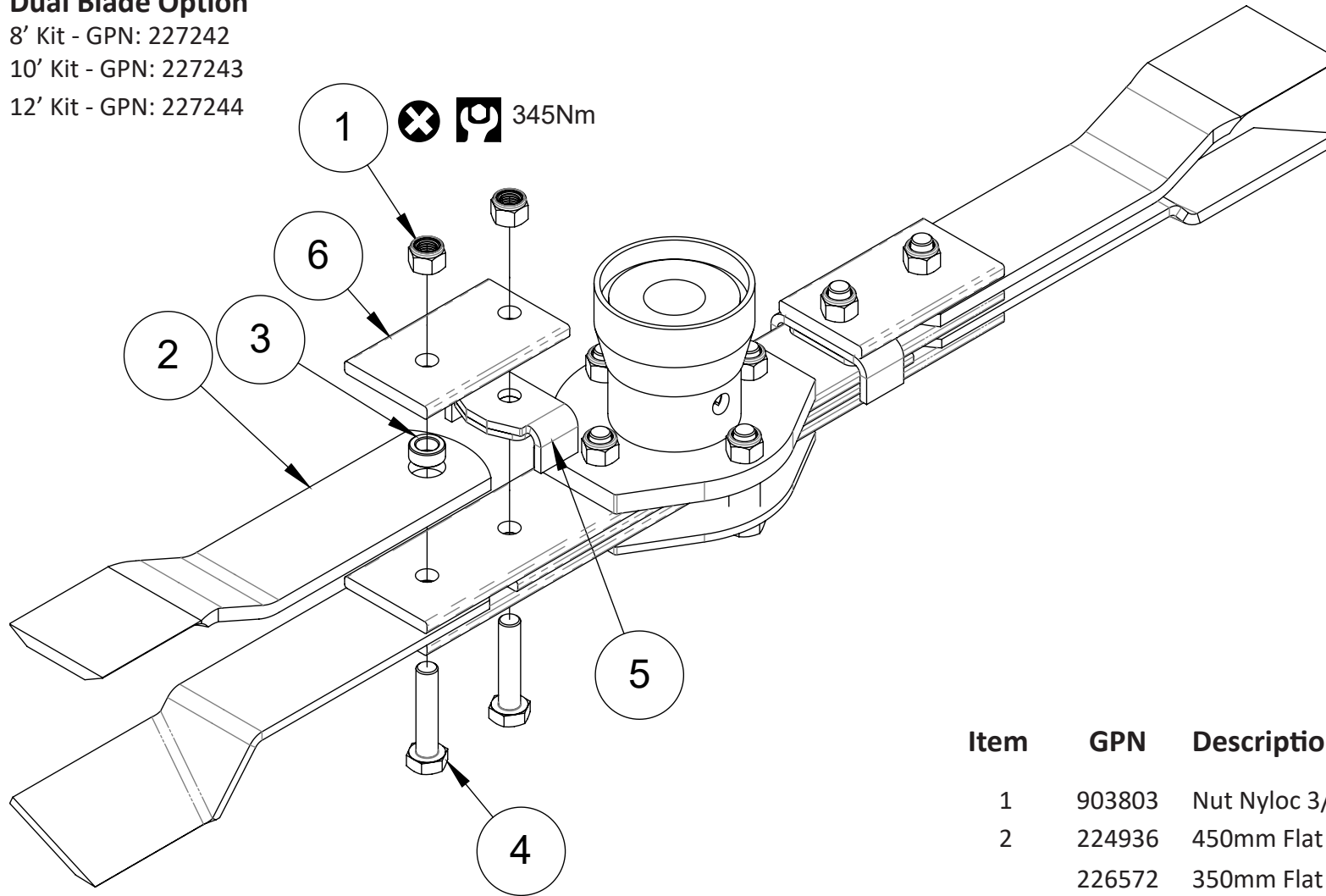
⊗ : Always Replace after disassembly


Dual Blade Option


8' Kit - GPN: 227242

10' Kit - GPN: 227243

12' Kit - GPN: 227244

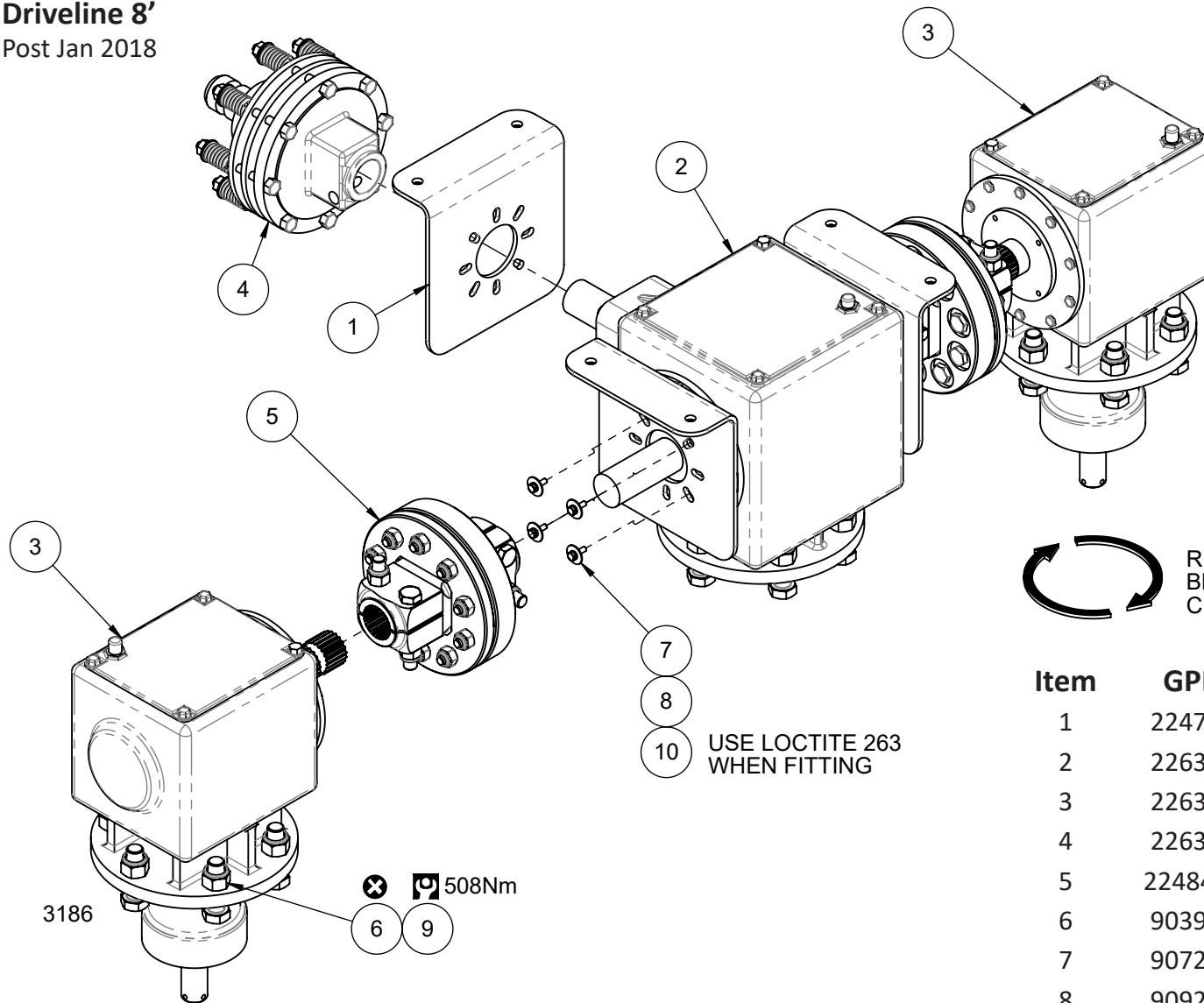


 : Critical Torque Setting (N.m)

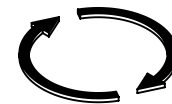
 : Always Replace after disassembly

Item	GPN	Description	Qty		
			8'	10'	12'
1	903803	Nut Nyloc 3/4" UNF GR.8	8	8	8
2	224936	450mm Flat Blade	2	2	2
	226572	350mm Flat Blade	2	-	-
3	223545	Bush - Blade 3/4"ld X 13mm	2	2	2
4	912820	Bolt 3/4 UNF x 3.5 HT	8	8	8
5	227248	Spacer - Dual Mulch Blade	2	2	2
6	227231	Rotor Bar Clamp Extension	2	2	2

Driveline 8'
Post Jan 2018



☑ : Critical Torque Setting (Nm)
⊗ : Always Replace after disassembly



RIGHTHAND GEARBOX
BLADE DIRECTION
CLOCKWISE



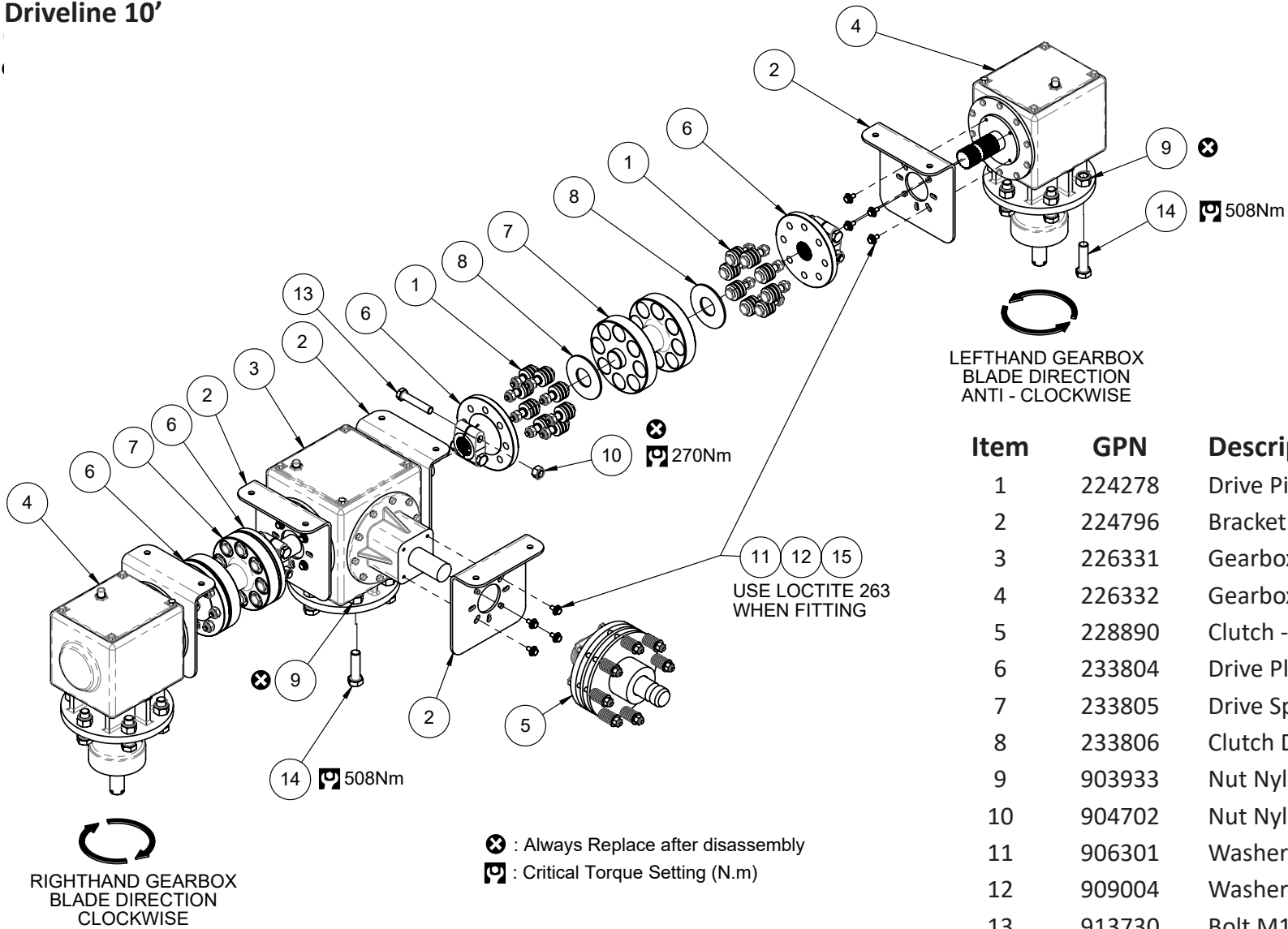
LEFTHAND GEARBOX
BLADE DIRECTION
ANTI - CLOCKWISE

7
8
10 USE LOCTITE 263
WHEN FITTING

Item	GPN	Description	Qty
1	224796	Bracket	3
2	226331	Gearbox Tee - 130HP 1:1.33 Ratio	1
3	226332	Gearbox - 130HP 1:1.467 Ratio	2
4	226359	Clutch - 4 Plate 100HP O'RUN	1
5	224843*	Cushion Coupling - Twin Clamp	2
6	903933	Nut Nyloc M20 CL10	18
7	907201	Washer Flat M6 x 25 ZP	12
8	909200	Washer Spring M6 SS	12
9	913807	Bolt M20 x 70 GR10.9 Hex ZP	18
10	917204	Screw Set M6 x 20 x 1.0P HT Hex ZP	12

* For machines built before January 2018, refer GPN. 227131 & 227132.

Driveline 10'



Item	GPN	Description	Qty
1	224278	Drive Pin Assy - Cushioned	32
2	224796	Bracket	5
3	226331	Gearbox Tee - 130HP 1:1.33 Ratio	1
4	226332	Gearbox - 130HP 1:1.467 Ratio	2
5	228890	Clutch - 4 Plate 150HP O'Run	1
6	233804	Drive Plate 8 Holes 1.75" x 20 Spline	4
7	233805	Drive Spacer - 154mm Painted	2
8	233806	Clutch Disc - 106 x 45 x 4mm	4
9	903933	Nut Nyloc M20 CL10	18
10	904702	Nut Nyloc M16 CL10	8
11	906301	Washer Flat 5/16 x 7/8 x 16 ZP	20
12	909004	Washer Spring M8 ZP	20
13	913730	Bolt M16 x 85 GR 8 ZP	8
14	913807	Bolt M20 x 70 GR 10.9 HEX ZP	18
15	917308	Screw Set M8 x 20 x 1.25P	20

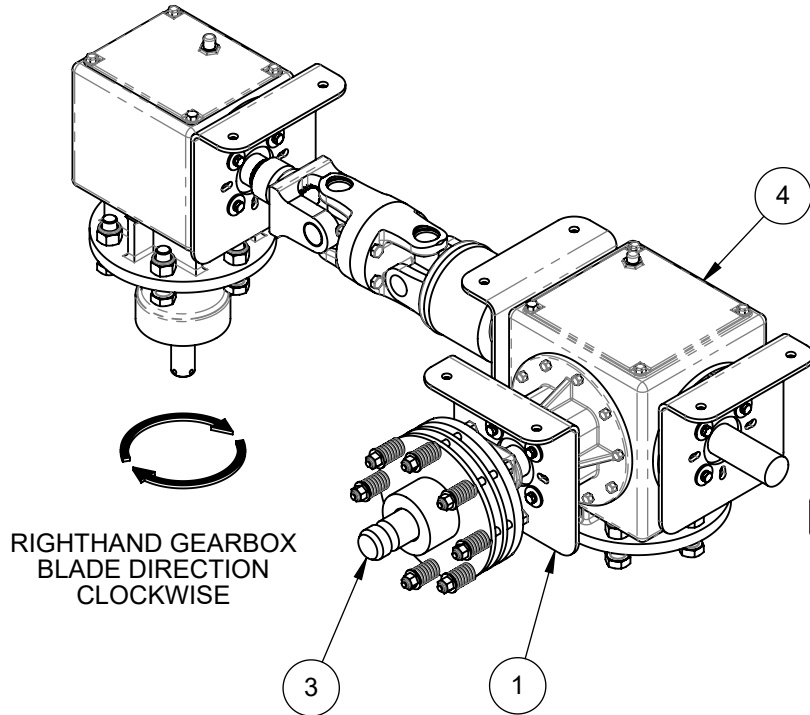
DRIVELINE SUITS 10ft PROPER TOPPER TWIN ROTOR MOWERS GPN.224770 & GPN.226346

Driveline 12' Trailed Comer

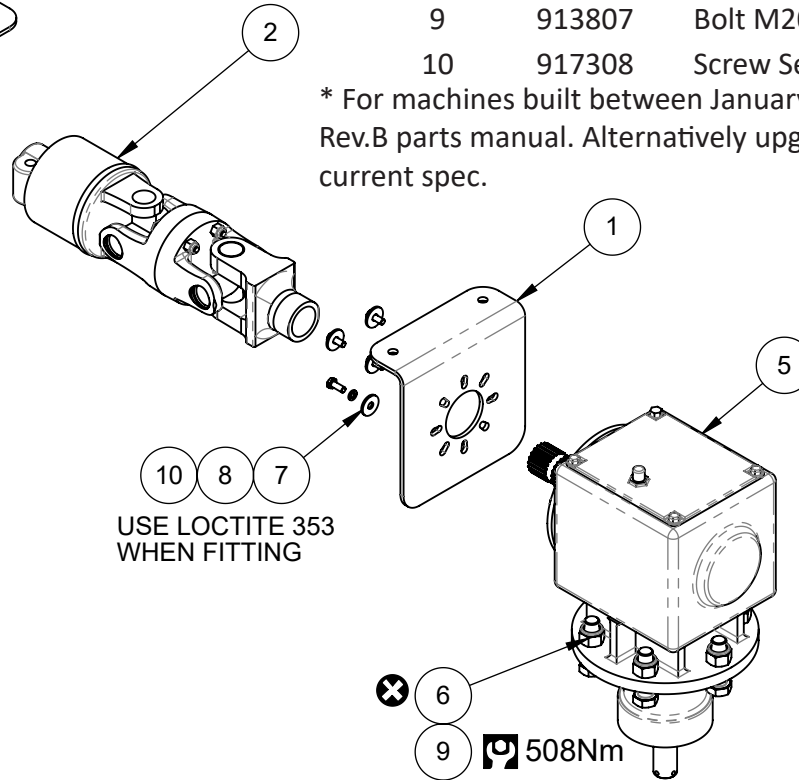
Pre 2013 & Post Jan 2018

Item	GPN	Description	Qty
1	224796	Bracket	5
2	225998*	Shaft - PTO SF80 165mm Tor. Comer	2
3	228890	Clutch - 150HP O'Run	1
4	228891	Gearbox Tee - 210HP 1:1 Ratio	1
5	228892	Gearbox - 210HP 1:1 Ratio	2
6	903933	Nut Nyloc M20 CL10	18
7	907413	Washer Flat 10 x 30 x 3 ZP	20
8	909004	Washer Spring M8 ZP	20
9	913807	Bolt M20 x 70 GR10.9 ZP	18
10	917308	Screw Set M8 x 20 x 1.25P	20

* For machines built between January 2013 and January 2018, refer Rev.B parts manual. Alternatively upgrade driveline components to current spec.



RIGHTHAND GEARBOX
BLADE DIRECTION
CLOCKWISE



LEFTHAND GEARBOX
BLADE DIRECTION
ANTI-CLOCKWISE

: Critical Torque Setting (Nm)

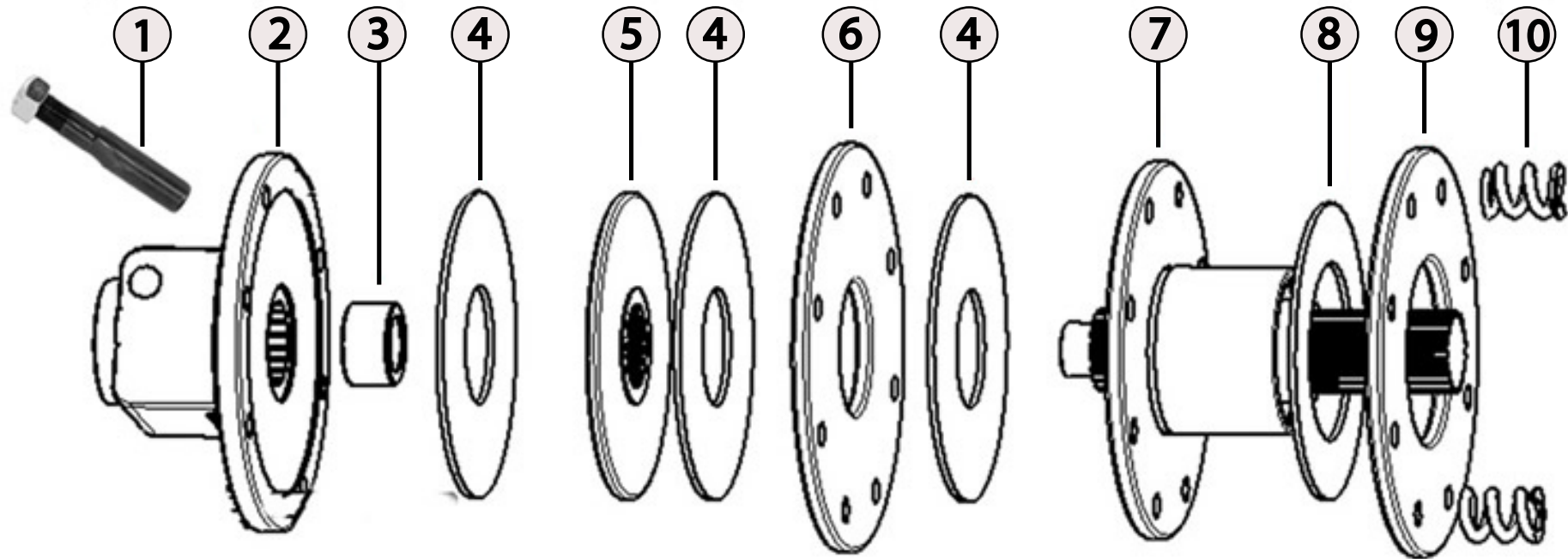
: Always Replace after disassembly

USE LOCTITE 353
WHEN FITTING

508Nm

Clutch Assembly

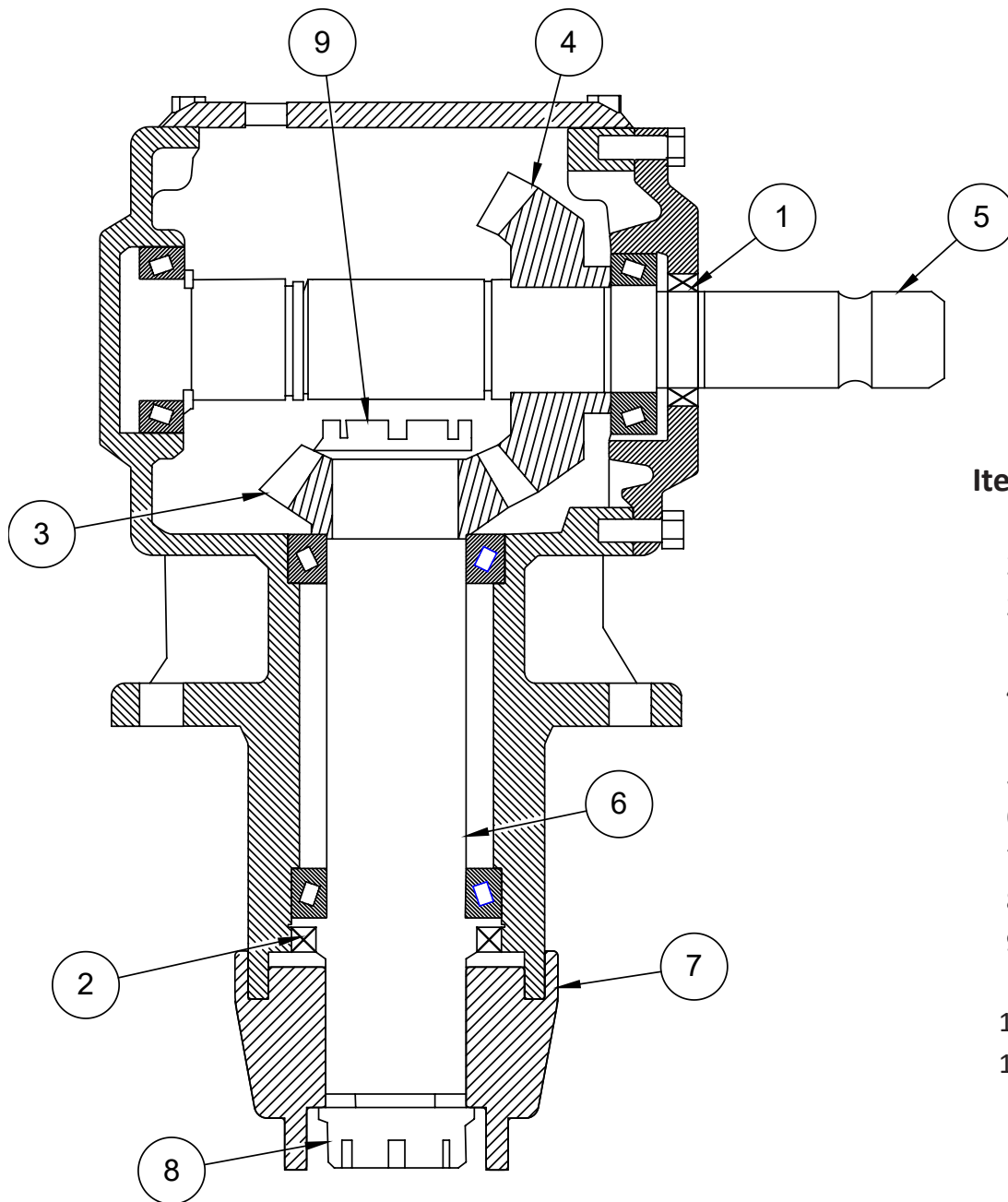
GPN: 226359



Item	GPN	Description	Qty
1	226611	Cotter Bolt & Nut	2
2	226360	1" 3/4 20 Spline Base Assy	1
3	228226	Bush - Base	8
4	228227	Friction Disc - 165OD x 64ID	3
5	228228	Drive Plate	8
6	228229	Pressure Plate	1
7	228230	Freewheel Unit 1 3/4" x 20 Spline	1
8	228231	Front Facing 160 x 96	1
9	228232	Outer Pressure Plate 200OD x 95ID	1
10	228233	Spring	Ref.
11	226359	Clutch - 4 Plate 100HP O'Run	Ref.

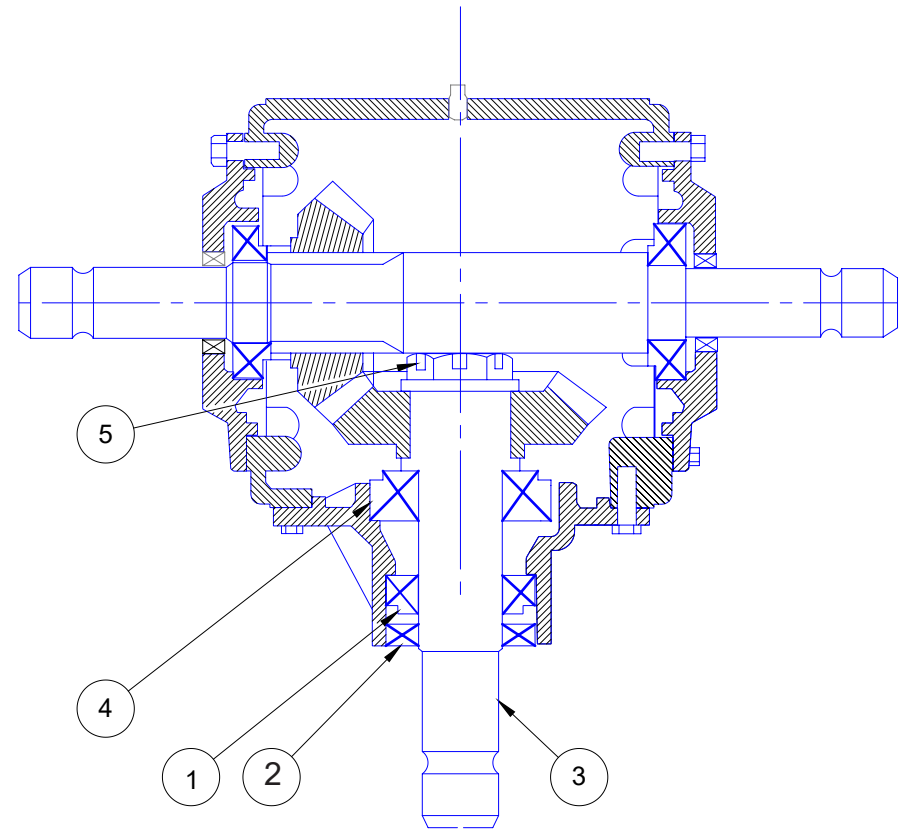
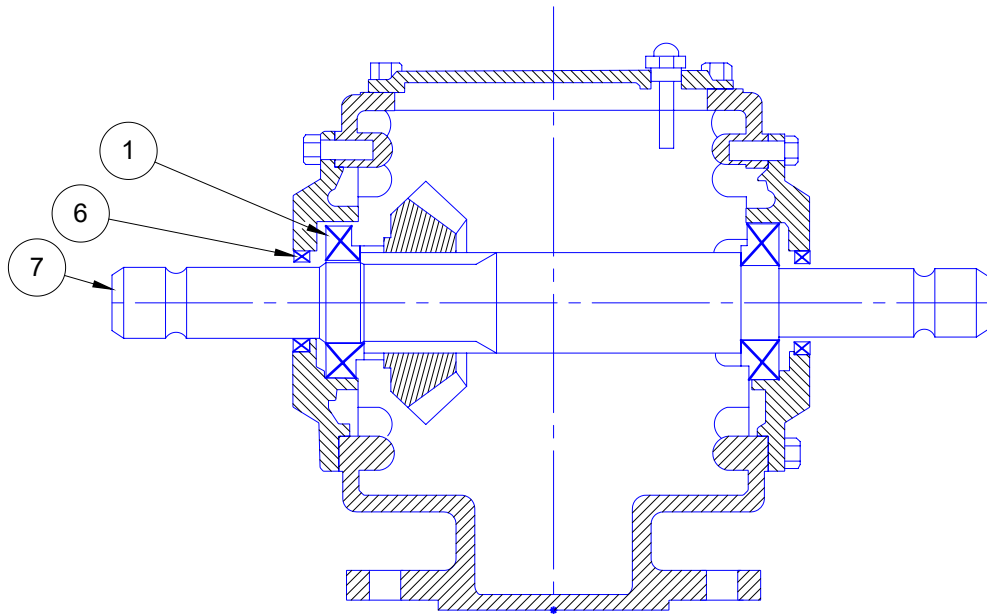
Note: Used on 3PL & 540 RPM driveline trailed models only.

Gearbox - Cutterhead



Item	GPN	Description	Qty
1	227423	Input Seal	1
2	227424	Output Seal	1
3	231140	Output Gear - 1:1	1
	227425	Output Gear - 1:1.467	
4	231140	Input Gear - 1:1	1
	227426	Input Gear - 1:1.467	
5	227427	Input Shaft	1
6	227428	Output Shaft	1
7	226352	Sleeve - Gearbox	1
8	226587	Nut - Gearbox Sleeve	1
9	227429	Top Output Nut	1
10	226332	Gearbox - 130HP 1:1.467 (540 RPM Driveline)	Ref.
10	228892	Gearbox - 130HP 1:1 (1000 RPM Driveline)	Ref.

Gearbox - Tee



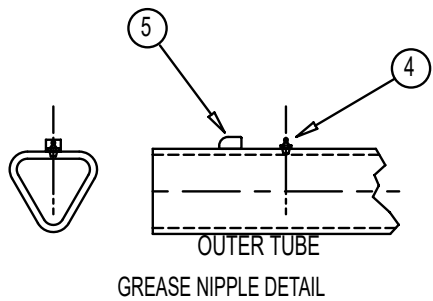
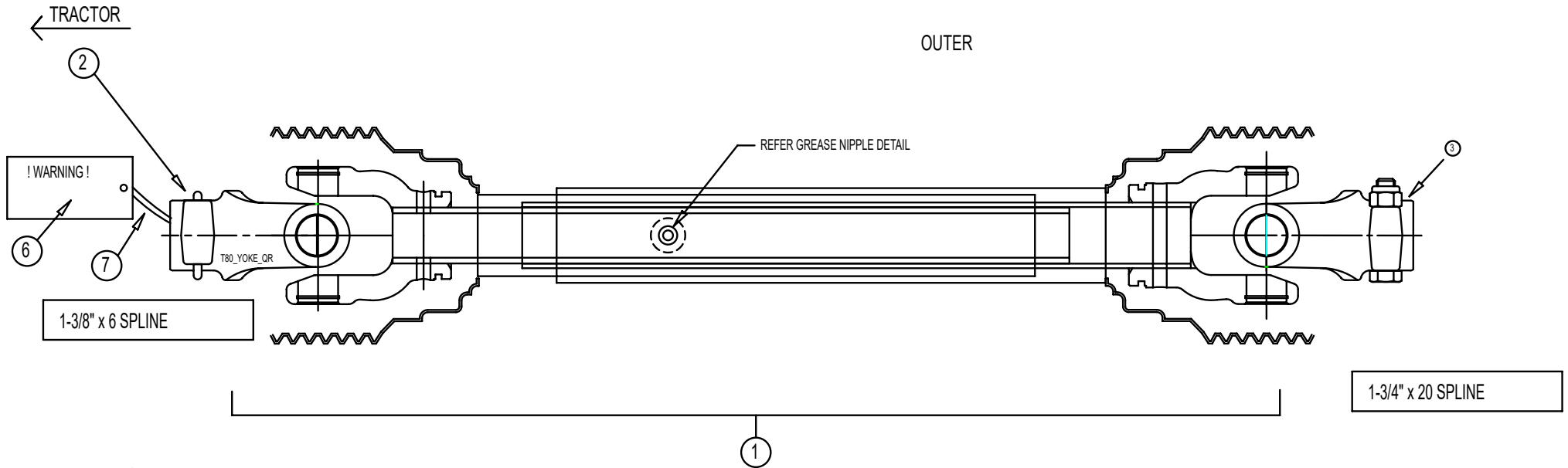
Item	GPN	Description	Qty
1	228856	Outer Bearing - Input Shaft + Cross Shaft	3
2	228858	Oil Seal - INPUT	1
3	228857	Input Shaft 20 Spline	1
4	228855	Rear Bearing - Input Shaft	1
5	227429	Slotted Nut 1 3/8" x 18 UNF	1
6	228853	Oil Seal - OUTPUT	2
7	228854	Through Shaft	1
8	226331	Gearbox - 130 HP 1:1.33 (540 RPM Driveline)	Ref.
8	228891	Gearbox - 150 HP 1:1 (1000 RPM Driveline)	Ref.

Input PTO Shaft (8' & 10' 3PL models)

(GPN: 226357)

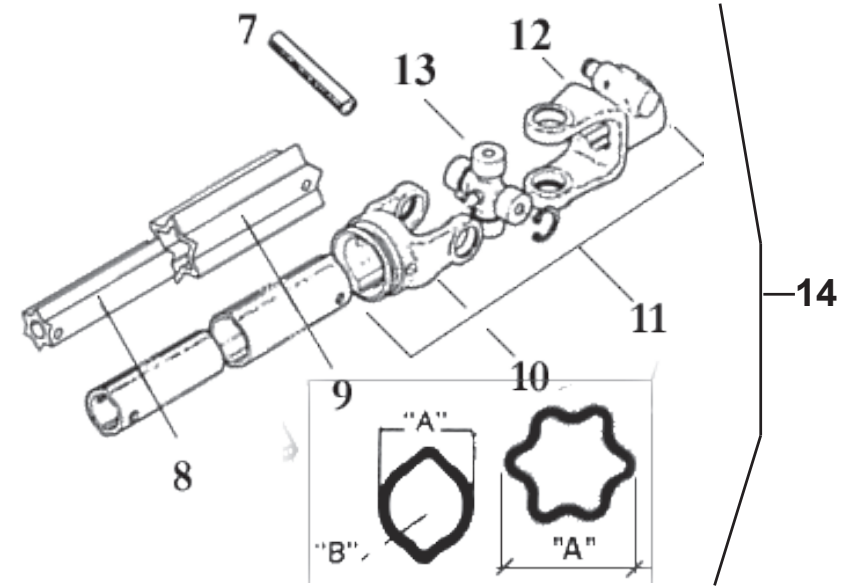
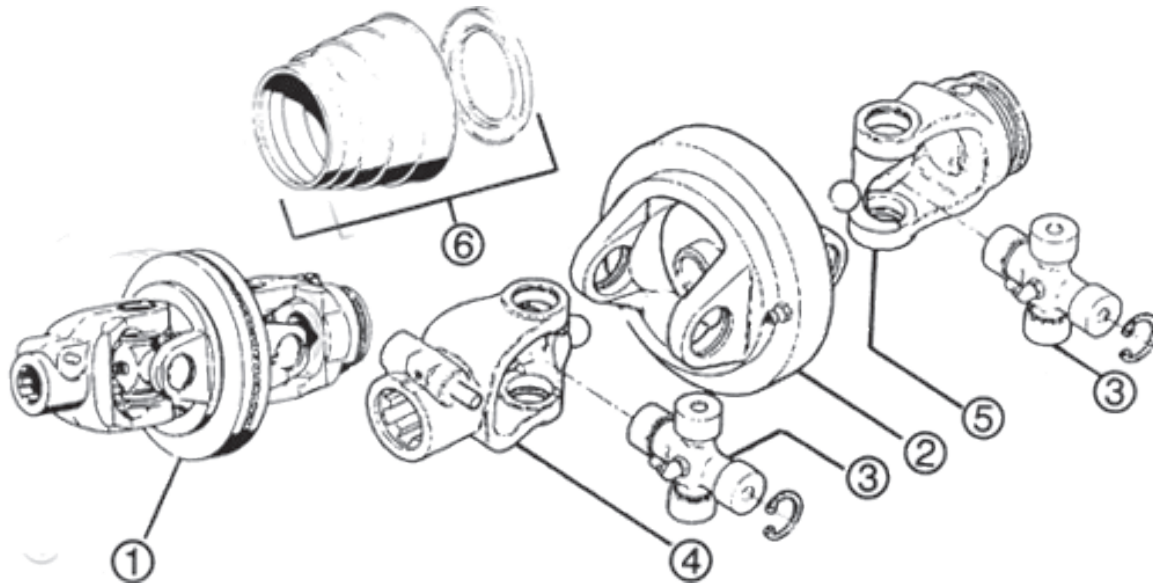
SUITS 540 RPM G/BOX

2622



Item	GPN	Description	Qty
1	226357	Shaft - PTO 8' & 10' PT	Ref.
2	227331	Yoke 1-3/8" 6SP - QR	1
3	226736	Yoke 1-3/4" 20 Spline Clamp	1
4	210775	Grease Nipple M6 Straight	1
5	225954	Flat - Grease Nipple Protector	1
6	224956	Warning Tag - PTO Shaft Length	1
7	810354	Cable Tie	1

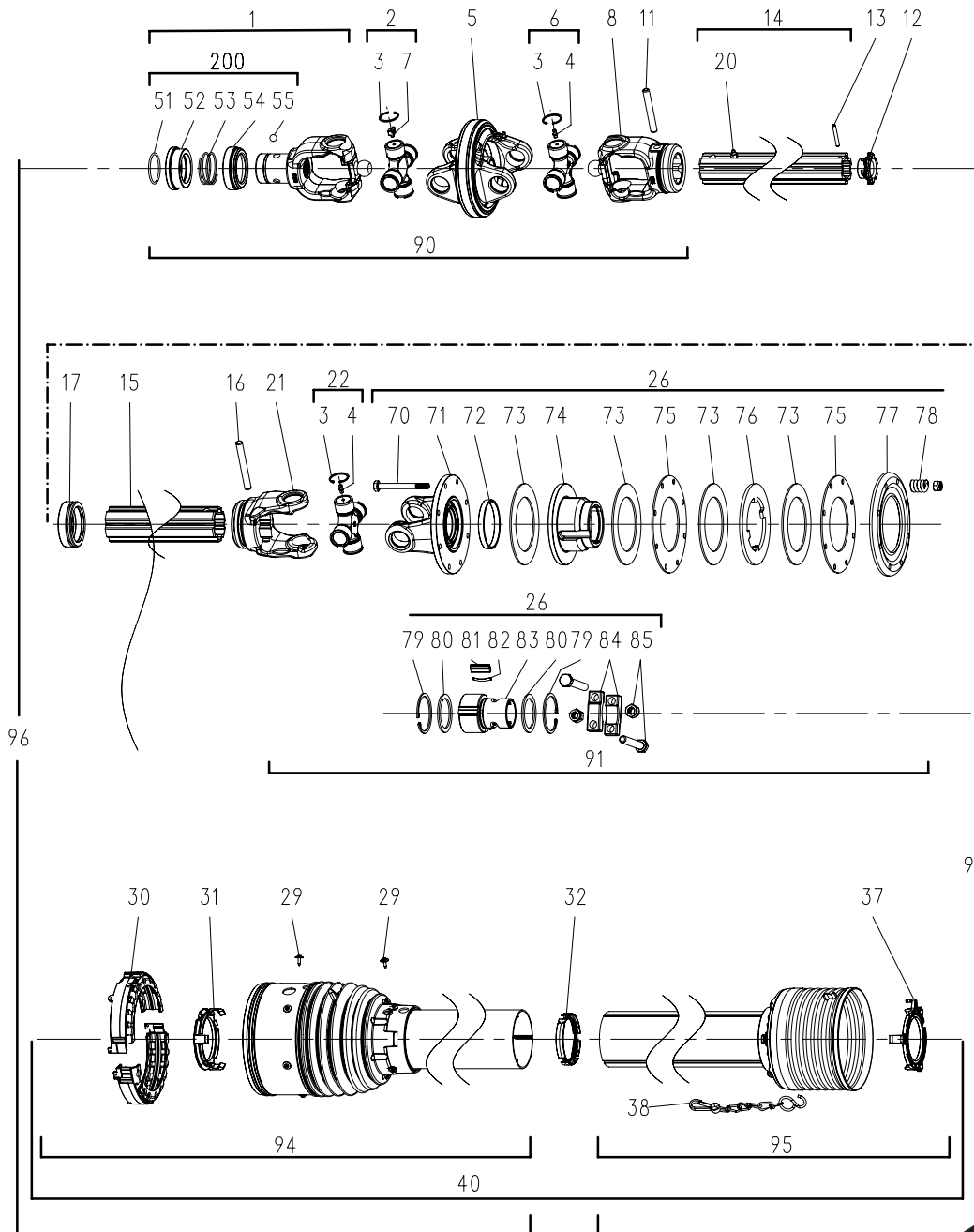
Input Shaft BareCo W/A (540 RPM Trailed Drivelines)



Item	GPN	Description	Qty	Item	GPN	Description	Qty
1	227609	Inner Tube Joint	1	8	227696	Inner Tube	1
2	227610	Centre Assembly	1	9	227697	Outer Tube	1
3	227691	Uni Cross Kit	2	10	227698	Outer Tube Yoke	1
4	225957	Quick Release End Yoke	1	11	227699	Out Tube Joint	1
5	227692	Inner Tube Yoke	1	12	226735	Yoke-W2500 1-3/4" x 20sp Clamp	1
	227693	Outer Tube Yoke	1	13	227700	Uni Cross Kit	1
6	227694	Safety Cover	1	14	226356	Shaft PTO – 10' PT TR 150LG WA	Ref.
7	227695	Roll Pin	2				

Input Shaft Comer VP9 W/A (1000 RPM Trailed Drivelines 2020 - current)

GPN: 236205



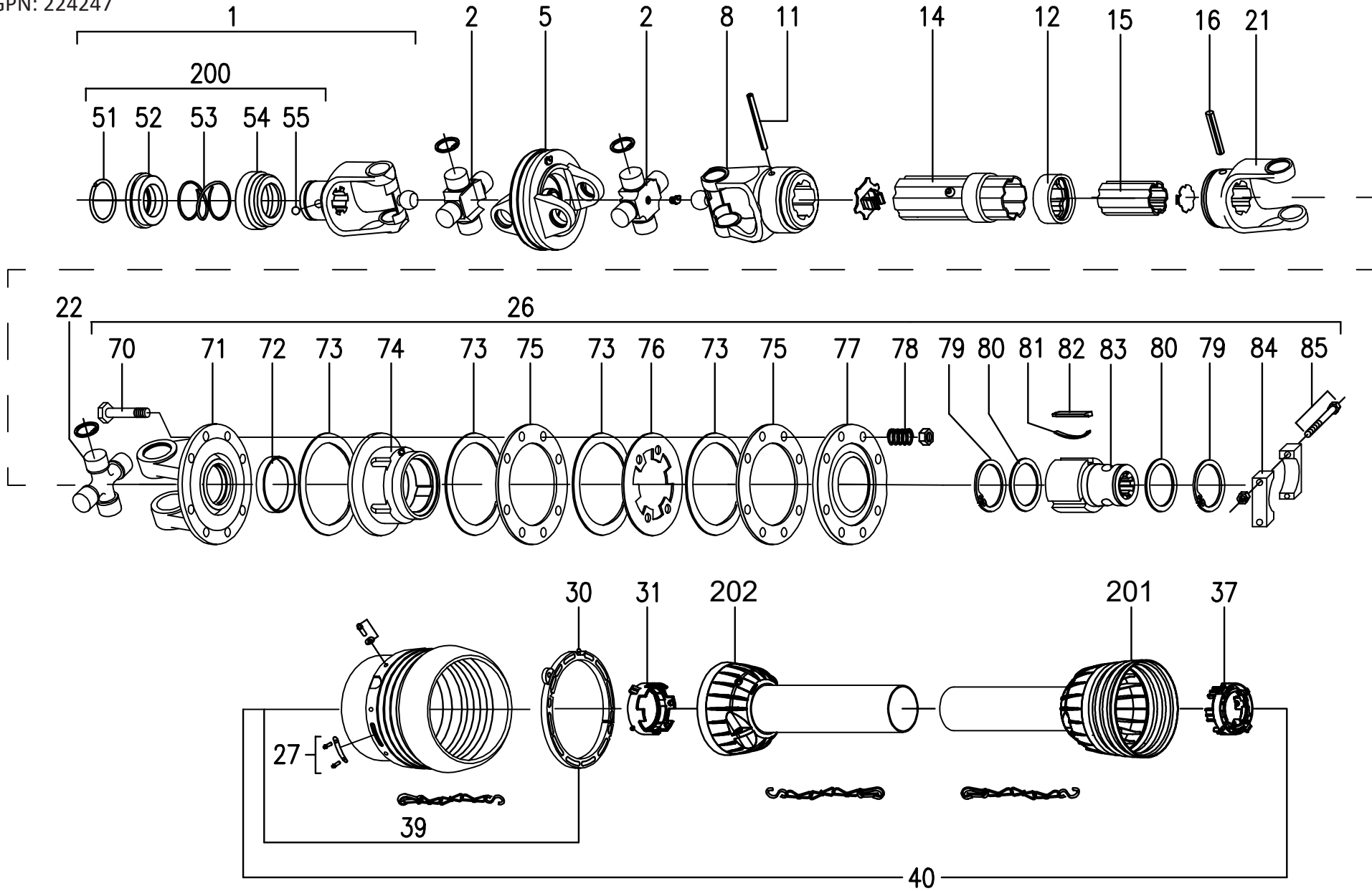
Input Shaft Comer VP9 W/A (1000 RPM Trailed Drivelines 2020 - current) (Continued)

GPN: 236205

Item	Comer Part No.	Description	Qty	Item	Comer Part No.	Description	Qty
1	141.229.045.1 1	Complete collar yoke (1 3/8" z21)	1	53	180.016.487 53	Collar spring	1
2	180.219.034 2	Cross journal set for CV-joint nipple 60'	1	54	180.016.483 54	Fixed sleeve	1
3	190.000.720 3	Circlip	12	55	190.000.078 55	Ball 1/2"	3
4	190.000.047 4	Grease Nipple	2	70	165.000.548 70	Bolt M10x1.5x100 & Nut	8
5	141.229.026.1 5	Wide angle double yoke	1	71	141.229.102.1 71	Flanged yoke	1
6	180.219.035 6	Cross journal set for CV-joint	1	72	180.017.112 72	Bush	1
7	180.217.035 7	Special Grease Nipple 60	1	73	180.017.106 73	Lining ring	4
8	141.229.027.1 8	Inner yoke for CV-joint	1	74	141.027.107.1 74	Body RF with grease nipple	1
11	190.000.243 11	Roll pin for inner tube	1	75	180.017.105 75	Inner plate	2
12	180.219.008 12	Wiper for inner tube	1	76	180.017.104 76	Intermediate plate	1
13	9490.325.000 13	Roll pin 6x45 UNI 6873	1	77	180.017.114.1 77	Pressure plate	1
14	150.780.023 14	Inner tube with lube system	1	78	180.014.022 78	Spring 6	8
15	150.880.503.0730 15	Outer tube	1	79	190.000.183 79	Circlip	2
16	9490.435.000 16	Roll pin for outer tube	1	80	180.014.135 80	Retaining washer ring	2
17	180.229.013 17	Bush for outer tube with wiper assembled	1	81	151.014.136 81	Tang	3
20	180.217.020 20	Grease nipple for lube	1	82	180.014.137 82	Carriage spring	3
21	151.219.092.1 21	Outer yoke	1	83	151.018.121 83	Hub R15 (1 3/4" Z20)	1
22	180.219.077 22	Cross journal set	1	84	151.014.201 84	Bridge	2
26	146.694.001.1 26	Complete disc clutch RF9 (1400Nm)	1	85	165.000.622 85	Bolt M14x1.5x100 & Nut	2
29	190.000.819 29	Screw	9	90	121.229.030.31 90	Wide angle CV-joint for inner tube	1
30	180.219.029 30	Bearing ring	2	91	121.229.046.31 91	U Joint for outer tube	1
31	180.219.028 31	Guard retaining collar for outer tube	1	94	142.496.043.2931 94	Half female guard	1
32	180.219.011 32	Guard support collar	1	95	142.497.019.2931 95	Half male guard	1
37	180.219.001 37	Guard retaining collar for inner tube	1	96	196911610CE00631 96	Half female shaft with guarding	1
38	180.016.790 38	Safety chain	1	97	124.496.012.31 97	Half male shaft with guarding	1
40	142.991.019.2931 40	Complete guard with instruction manual	1	100	190.000.881 100	Instruction manual	1
51	190.000.451 51	Outer circlip	1	200	165.000.628 200	Kit collar 1 3/8"	1
52	151.016.486 52	Sliding sleeve collar	1				

Input Shaft Comer V80 W/A (1000 RPM Trailed Drivelines Pre - 2020)

GPN: 224247



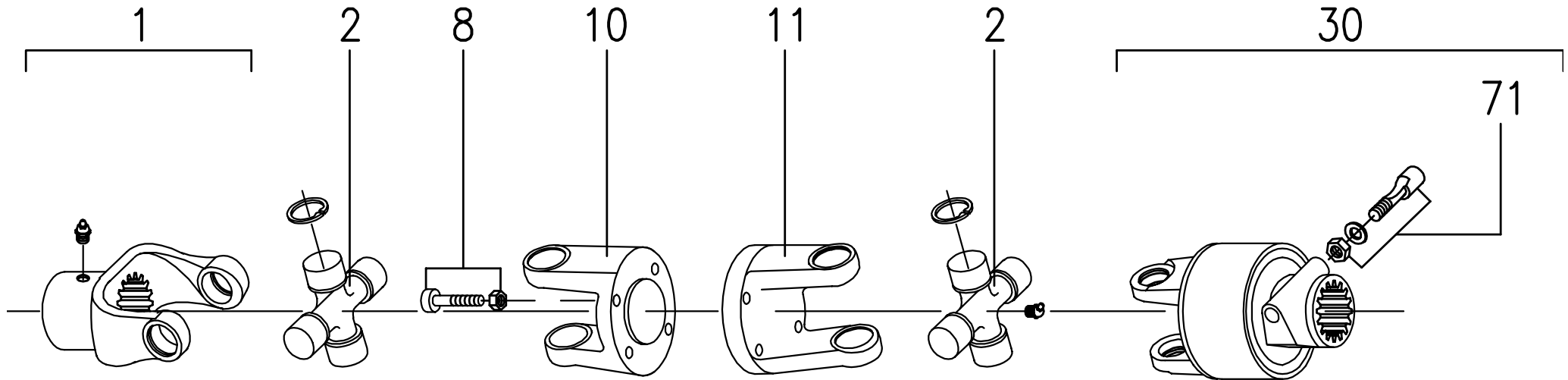
Input Shaft Comer V80 W/A (1000 RPM Trailed Drivelines Pre - 2020) (Continued)

GPN: 224247

Item	GPN	Description	Qty.	Item	GPN	Description	Qty.
1	224946	Complete Collar Yoke for CV-Joint	1	55	226324	Ball 1/2"	3
2	226273	Cross Journal Set for CV-Joint	2	70	913416	Bolt M10x100	8
5	226294	Wide Angle Yoke	1		904402	Nut Nyloc M10	8
8	226275	Outer Yoke	1	71	226308	Flanged Yoke	1
11	226272	Roll Pin	1	72	226309	Bush	1
12	226266	Wiper	1	73	226310	Lining Ring	4
14	226389	Complete Outer Tube Rislant 3m	1	74	226311	Body RF with Grease Nipple	1
15	226390	Inner Tube Rislant 3m	1	75	226312	Inner Plate	2
16	226268	Roll Pin	1	76	226313	Intermediate Plate	1
21	226265	Inner Yoke	1	77	226314	Pressure Plate	1
22	224992	Cross Journal Set	1	78	226290	Spring	8
26	226306	Complete RF9 (1400Nm)	1	79	226303	Inner Circlip	2
27	226296	Set Sheet & Screw	1	80	226302	Retaining Washer	2
30	226298	Bearing Ring	1	81	226300	Carriage Spring	3
31	226291	Guard Retaining Collar for Outer Tube	1	82	226301	Tang	3
				83	226315	Hub R15 (1 3/4" Z20)	1
37	226292	Guard Retaining Collar for Inner Tube	1	84	226304	Bridge	2
				85	913648	Bolt M14x100 1.5	2
39	226297	Guard Cone Set	1		904602	Nut Nyloc M14	2
40	226307	Complete Guard with Manual	1	200	226305	Kit Collar 1 3/8"	1
51	226320	Circlip	1	201	226400	Guard Standard (Tube not Included)	1
52	226321	Sliding Sleeve Collar	1	202	226401	Guard Short (Tube not Included)	1
53	226322	Spring	1				
54	226323	Fixed Sleeve	1				

PTO - Transfer Shaft

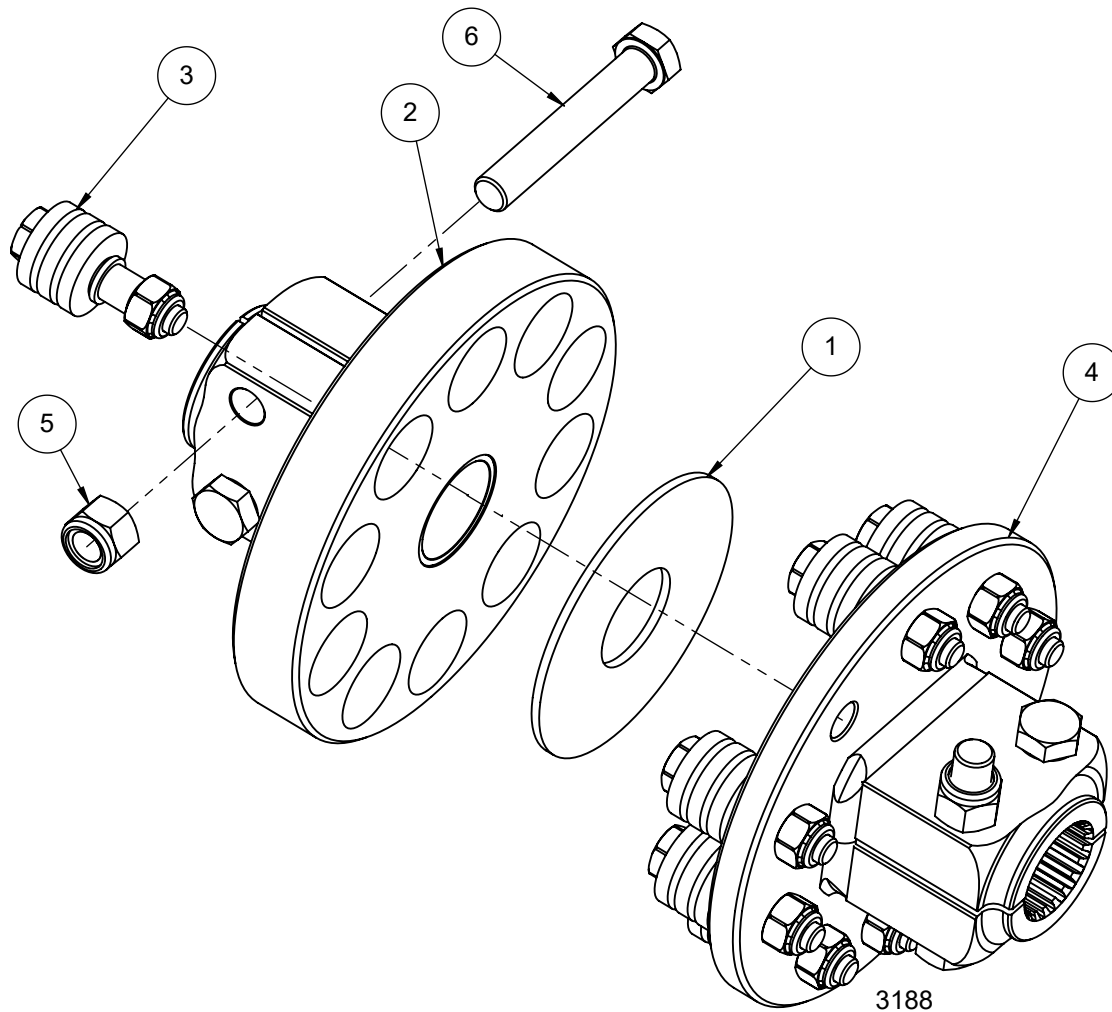
GPN: 225998



Item	GPN	Description	Qty
1	N/A	Special Yoke 125 with Grease Nipple (1 3/4" Z20)	1
2	224992	Cross Journal Set	2
8	913651	Bolt M14x5 1.5	4
	904602	Nut Nyloc M14	4
10	N/A	Male Flanged Yoke	1
11	N/A	Female Flanged Yoke	1
30	226385	Complete Rubber Element G19 (1 3/4" Z20)	1
71	226285	Tapered Pin Set 1 3/4"	1

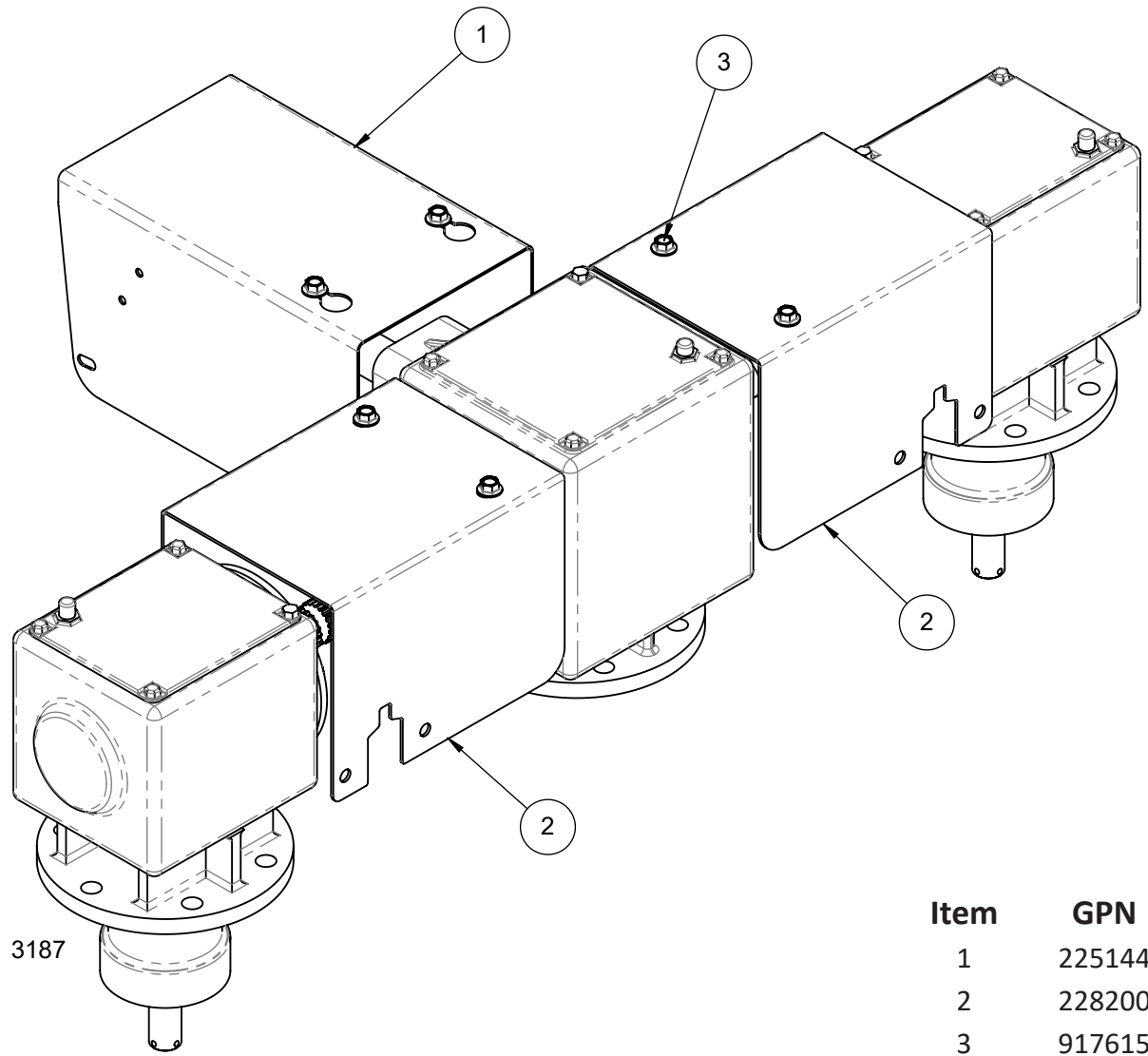
Cushion Coupling

Post Jan 2018



Item	GPN	Description	Qty
1	224274	Cutch Disc	1
2	224277	Drive Plate	1
3	224278	Drive Pin Assy - Cushioned	10
4	229404	Drive Plate - Back Plate	1
5	903930	Nut Nyloc M16 CL8	4
6	913659	Bolt M16 x 100 GR10.9 Hex HD	4

Driveline Guards - 8' PT

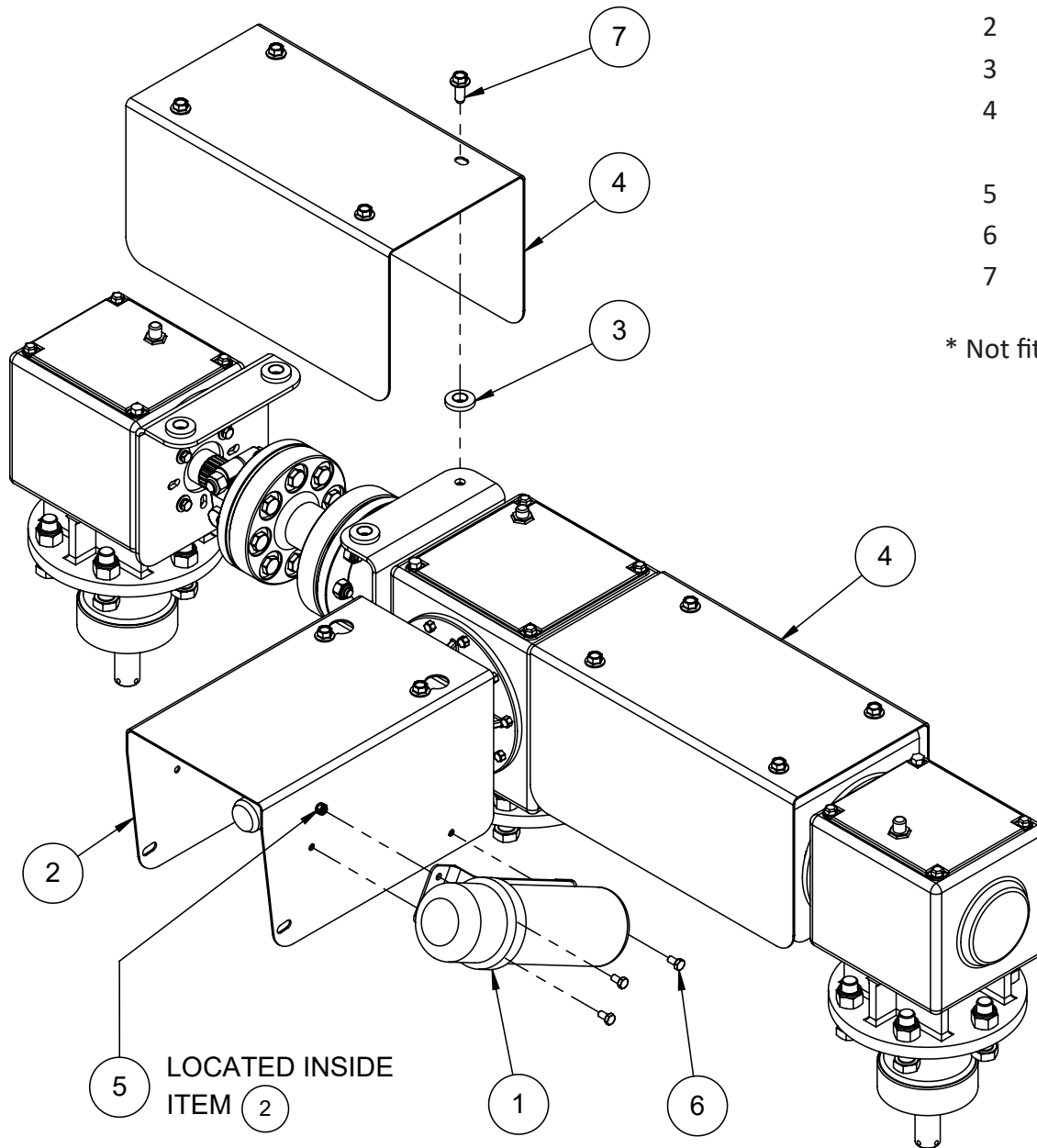


Item	GPN	Description	Qty
1	225144	Plate - Guard	1
2	228200	Guard	2
3	917615	Screw Set M12 x 30 Purlin	6

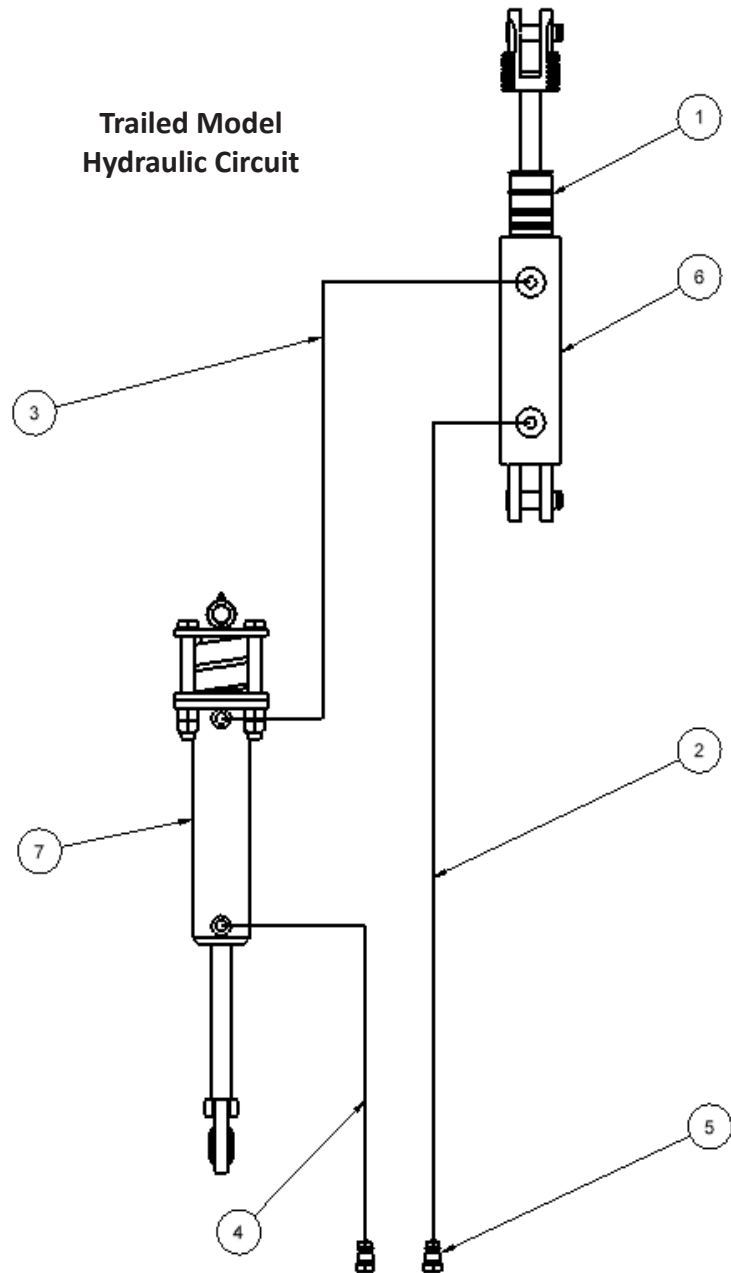
Driveline Guards - 10' & 12' PT

Item	GPN	Description	Qty (10')	Qty (12')
1	224257	Document Holder - Black	1*	1
2	225144	Plate - Guard	1	1
3	225153	Rubber Cushion Drive - Mower	8	8
4	226368	Plate - Guard 10' PT	2	0
	225148	Plate - Guard 12' PT	0	2
5	903302	Nut Nyloc M8	3*	3
6	917305	Screw Set M8 x 15 x 1.25P	3*	3
7	917615	Screw Set M12 x 30 Purlin	10	10

* Not fitted to guard on 3PL model.



Hydraulic Layout



3PL Models Hydraulic Components

GPN	Description	Qty
226746	Hydraulic Cylinder - 2.5" x 8"	1
226747	Hose 3/8" SAE100R2 3500mm	2
226749	Fitting - 3/4' BSPPM x 3/8" BSPTM	2
226751	Nipple - 1/2" Quick Release	2
226750	Fitting - 3/8" BSPMF 90 Deg	2
226748	Nipple - 3/8 BSPP x 1/2 NPT	2
223530	Cylinder Mod	1

Trailed Models Hydraulic Components


Item	GPN	Description	Qty
1	228633	Collar Set - Cyl Depth 28-32	2
2	225296	Hose 3/8" SAE100R2 4700mm	1
3	225716	Hose 3/8" SAE100R2 4100mm	1
4	225717	Hose 3/8" SAE100R2 2000mm	1
5	804053	Nipple - Quick Release 1/2"	2
6	237987	Cylinder Hyd 3.25" x 8"	1
7	223530	Cylinder Hyd 3.0" x 8"	1

Seal Kit Part Numbers

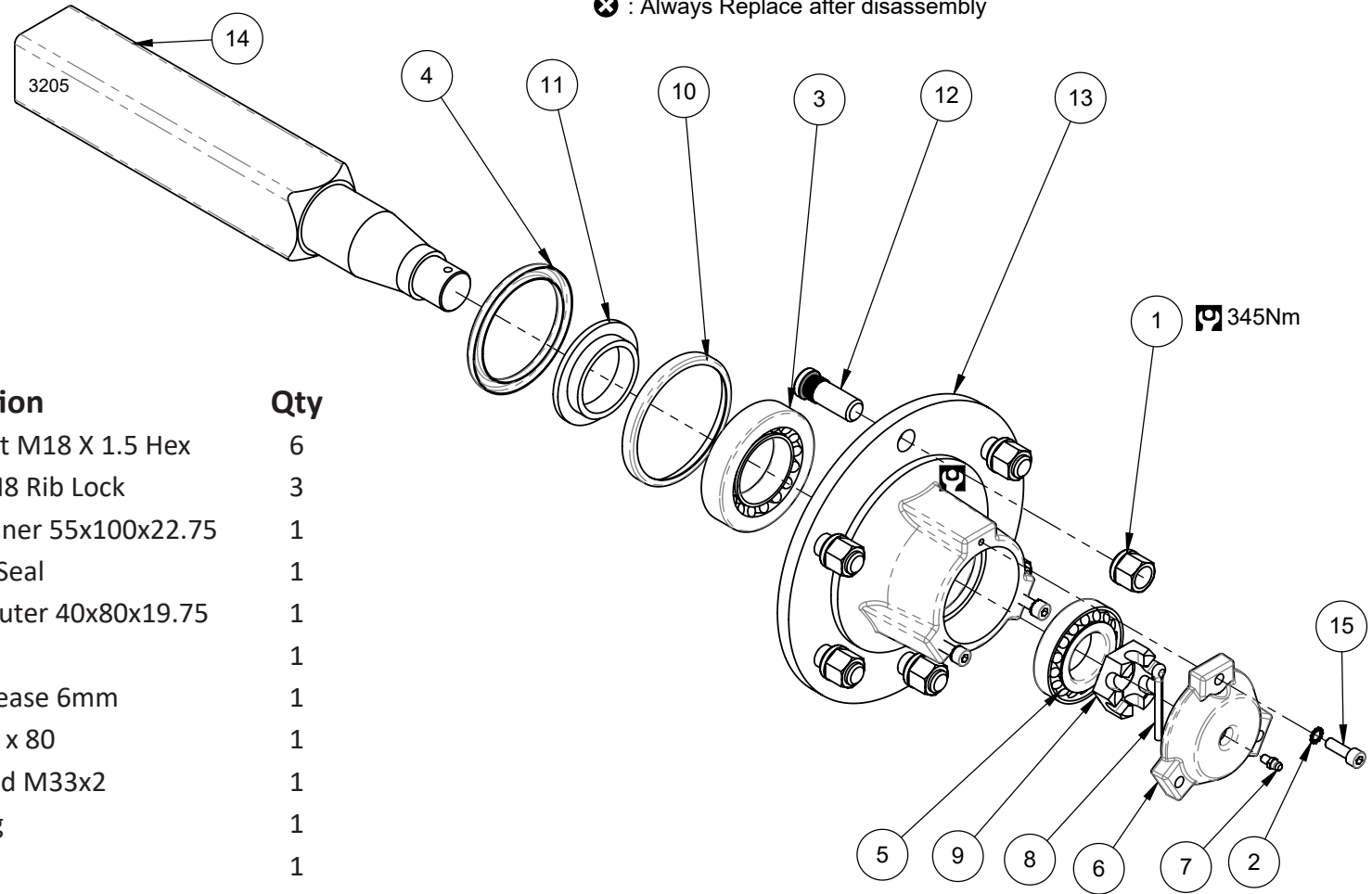
Cylinder GPN	Seal Kit GPN
237987	225943
223529	225942
223530 (223550)	225942
226746	227765

Axle

GPN: 220724

 : Critical Torque Setting (Nm)

 : Always Replace after disassembly



Item	GPN	Description	Qty
1	204622	Wheel Nut M18 X 1.5 Hex	6
2	217232	Washer M8 Rib Lock	3
3	205298	Bearing Inner 55x100x22.75	1
4	220737	Triple Lip Seal	1
5	205297	Bearing Outer 40x80x19.75	1
6	220740	Dust Cap	1
7	220741	Nipple Grease 6mm	1
8	220742	Pin Split 8 x 80	1
9	220745	Nut Slotted M33x2	1
10	220746	Wear Ring	1
11	220747	Seal Ring	1
12	204621	Stud Wheel M18x1.5	6
13	220749	Hub Machined	1
14	221039	Axle Stub Machined	1
15	922316	Screw Cap M8 x 25mm	3
16	204678	Axle Assembly	Ref